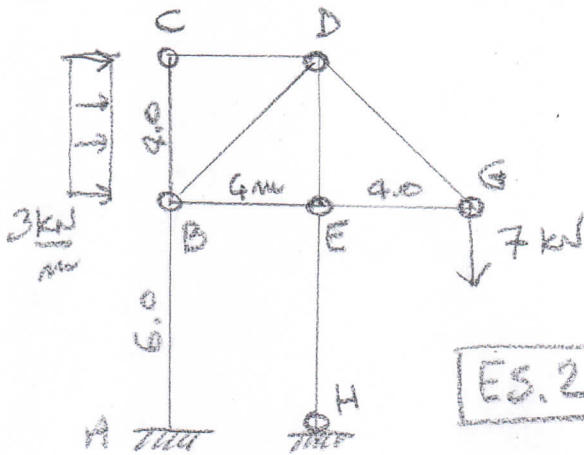


ES.1

- R.V. ext (A, D, E) e int (B, C)

- Diagrammi N, T, M quotati

- Funzione $M(z)$ in CD con $O \equiv C$



ES.2

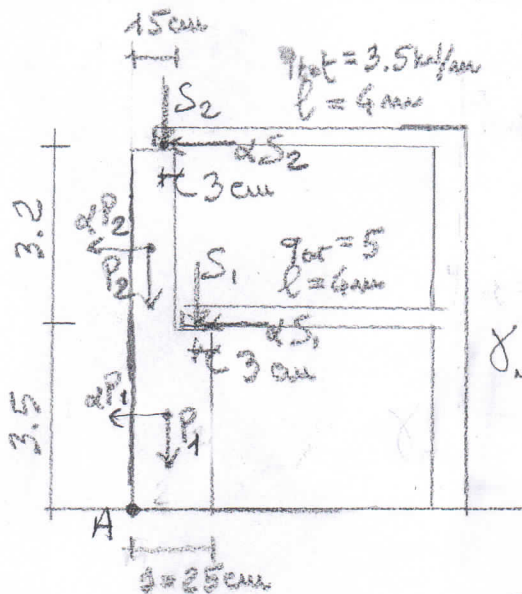
- R.V. ext (A, H)

- R.V. int. (B, E)

- Spazi assiali in BC, CD, BD, EH, AB

- Spazi assiali in BE, DE, EG, DG

- Diagrammi T, M quotati dove $\neq 0$



ES.3

- Determinare pesi muri 1° e 2° piano

- Determinare scarichi solari

- Determinare α in modo che ci sia equilibrio intorno ad A tra P_1, P_2, S_1, S_2 e $\alpha P_1, \alpha P_2, \alpha S_1, \alpha S_2$

- Determinare posizione di G

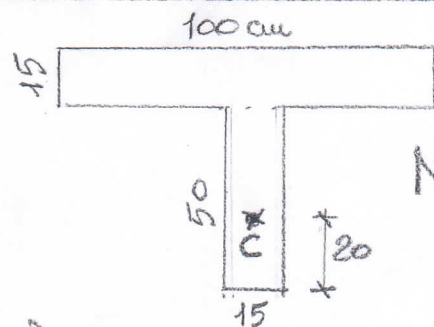
ES.4

- I_{x_G}

- $N_G, M_x \Leftrightarrow N_c$

- $m-m$ e tracciare diagrammi σ_x

- C \bar{e} ext o int al m.c.i.?



$N_c = -30 \text{ kN}$