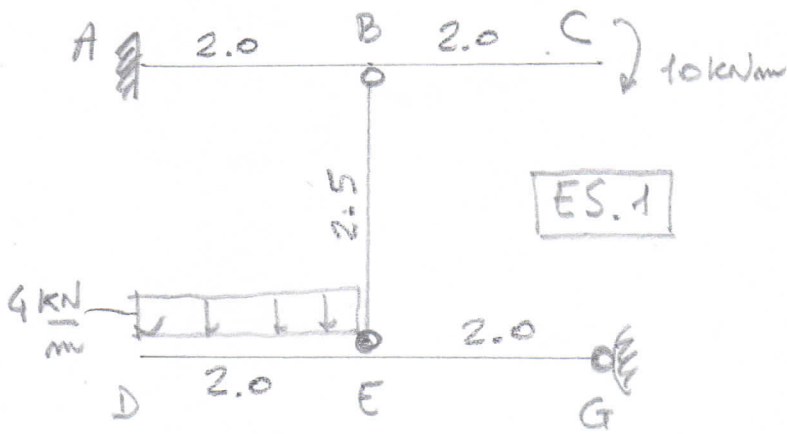


19/9/2018

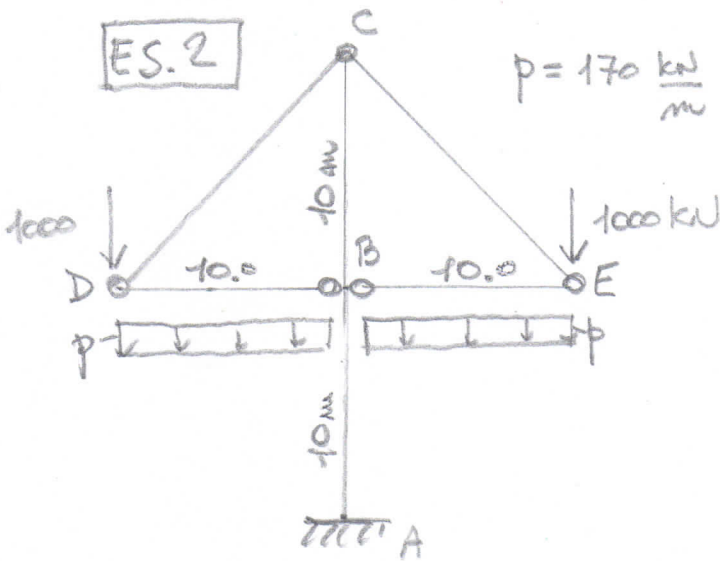
COGNOME _____

NOME _____



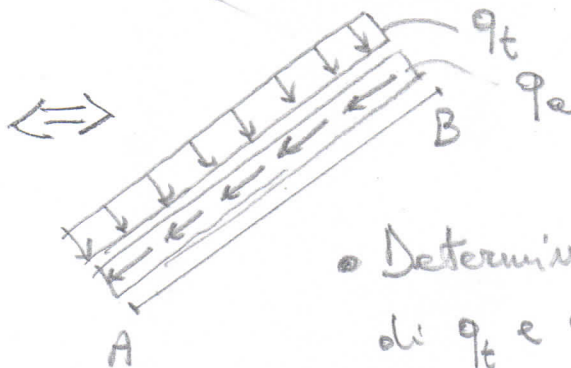
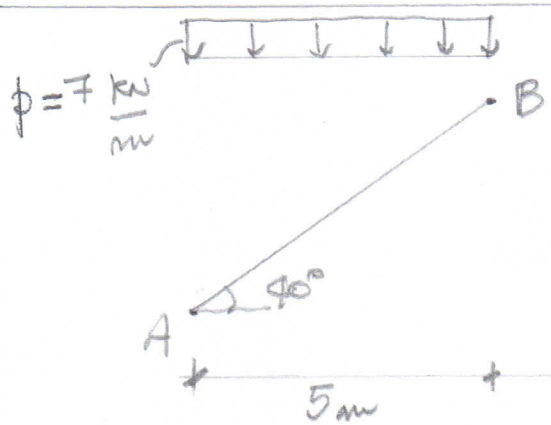
ES.1

- R.V. ext (A,G) e int. (B,E)
- Diagrammi quotati di N, T, M
- Δl_{BE} con $A = 5 \text{ cm}^2$, $E = 30000 \frac{\text{N}}{\text{mm}^2}$
- $\Delta \varphi_{BC}$ con $I = 400 \text{ cm}^4$, E come sopra



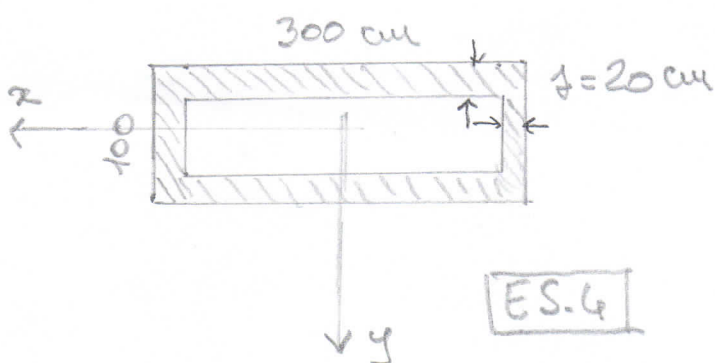
ES.2

- R.V. ext (A) e int. (B,C,D,E)
- Diagrammi quotati N, T, M
- Diagrammi quotati N, T, M su tratto AC se $p_{\text{sin}} = 85 \frac{\text{kN}}{\text{m}}$ e $p_{\text{ax}} = 170 \frac{\text{kN}}{\text{m}}$



ES.3

- Determinare i valori di q_t e q_n equivalenti a p .



ES.4

$M_y = 9000 \text{ kNm}$

- Disegnare σ , m , n
- Determinare I_x e I_y
- Diagramme ed espressioni di σ_z
- σ_z^{max} e σ_z^{min}
- Asse neutro con $I_x = 13000$ e $I_y = 9000$