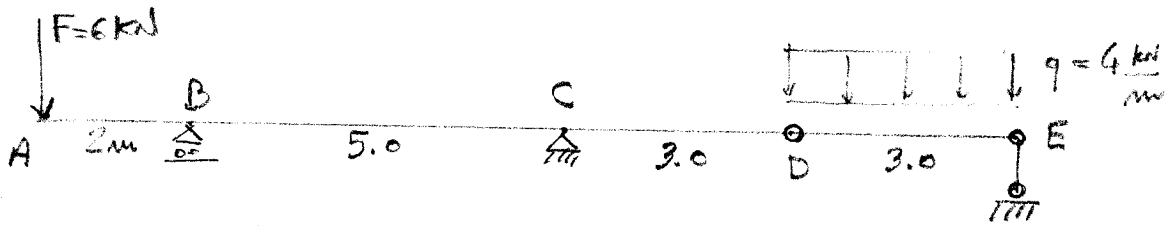


22/04/2013

COGNOME _____

NAME _____

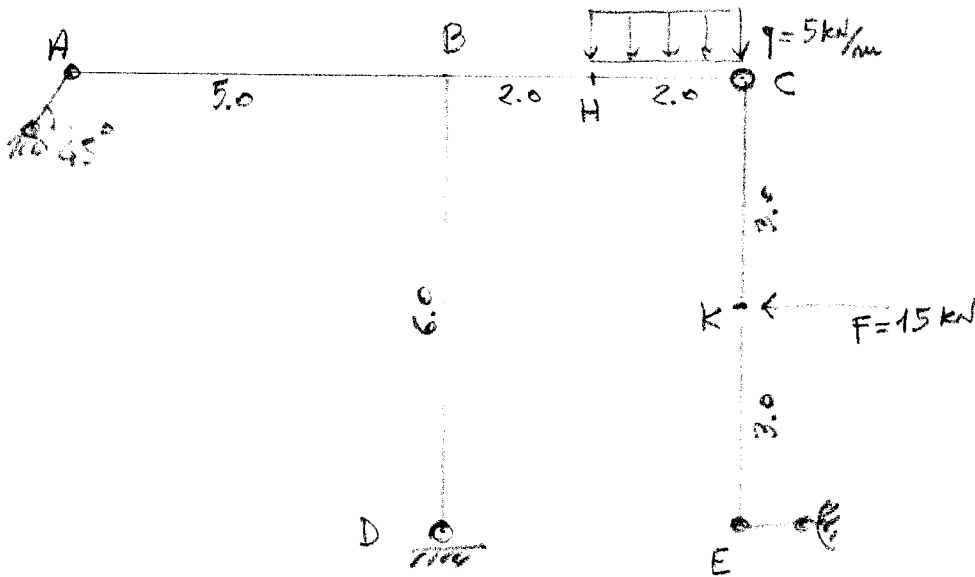


1

• R.V. ext. e int. con sola q , con sola F , con entrambi

• C&S

• Funzione $M(z)$ in CD con origine in C (sola q e entrambi i carichi)

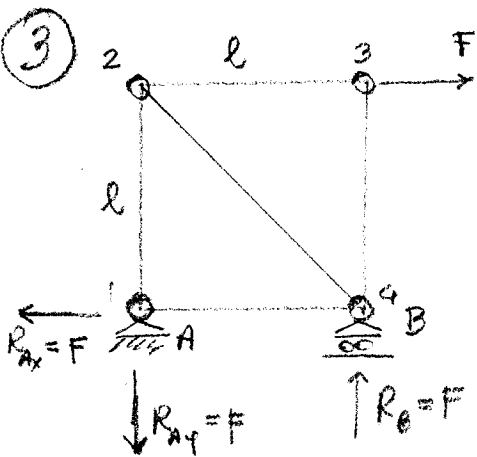


2

• R.V. ext e int

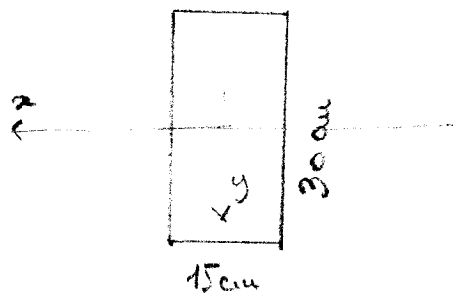
• C&S

• Funzione $M(z)$ in BHC con origine in B (sola q e entrambi i carichi)



• N_{24} con sezione di Kletter

• Equilibrio grafico modo 1



4

M_x in C es ① con sola q o entrambi carichi opp.

M_x in B^{dx} es ② con sola q o entrambi i carichi

• Assi: momento, sollecitazione, neutro

• Diagramme σ_z

• Valori di σ_z^{\max} e σ_z^{\min}