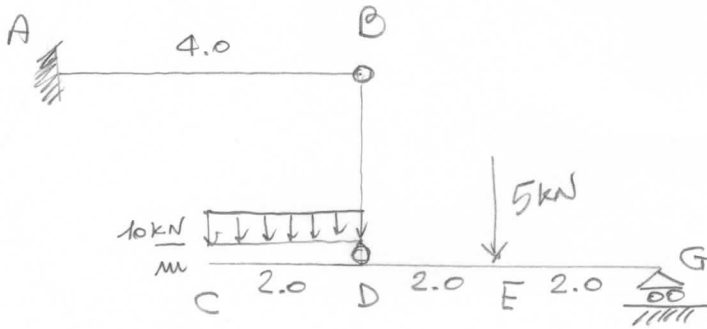


13/2/2013

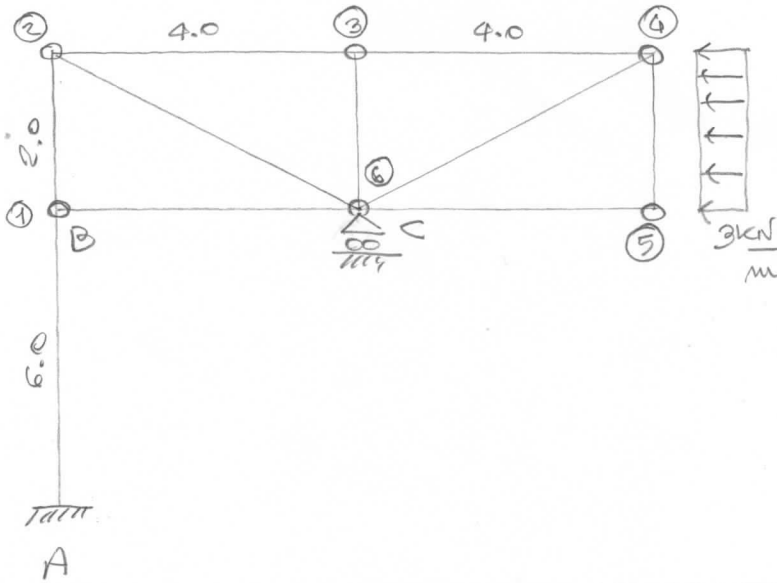
COGNOME \_\_\_\_\_

NOME \_\_\_\_\_



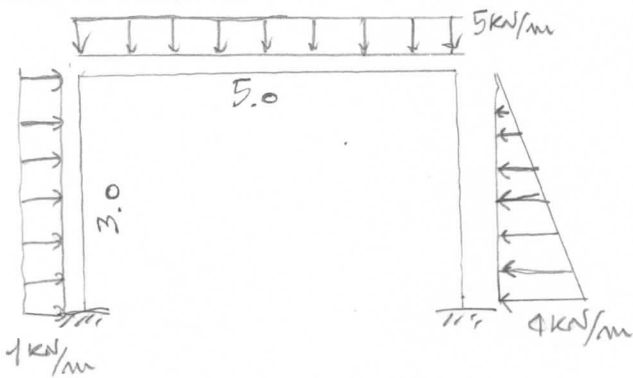
(A)

- R.o.V. ext. e int.
- Diagrammi quotati delle CdS
- Funzione  $M(z)$  in CD con origine in C



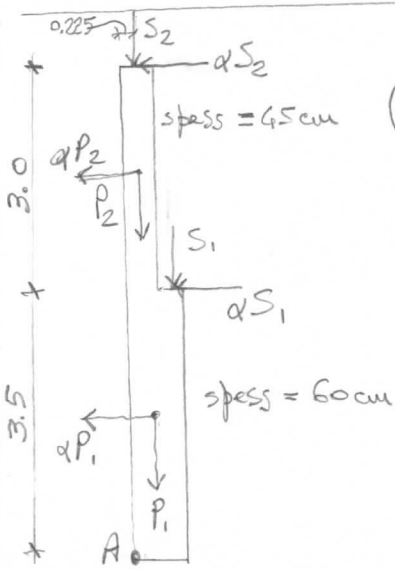
(B)

- R.o.V. ext e interne in B
- Sforzi assiali in almeno tre aste
- Sforzi assiali nelle rimanenti aste
- Diagrammi  $T$  e  $M$  asta 4-5



(C)

- Risultante delle forze esterne grafica e analitica
- Asse centrale delle forze esterne grafico e analitico



(D)

$S_1 = 8 \text{ kN}$   $S_2 = 4 \text{ kN}$   
 $\alpha = 0.15$   
 $\gamma = 18 \text{ kN/m}^2$

•  $M_A$



(E)

- Centri di rotazione
- Catene cinematiche