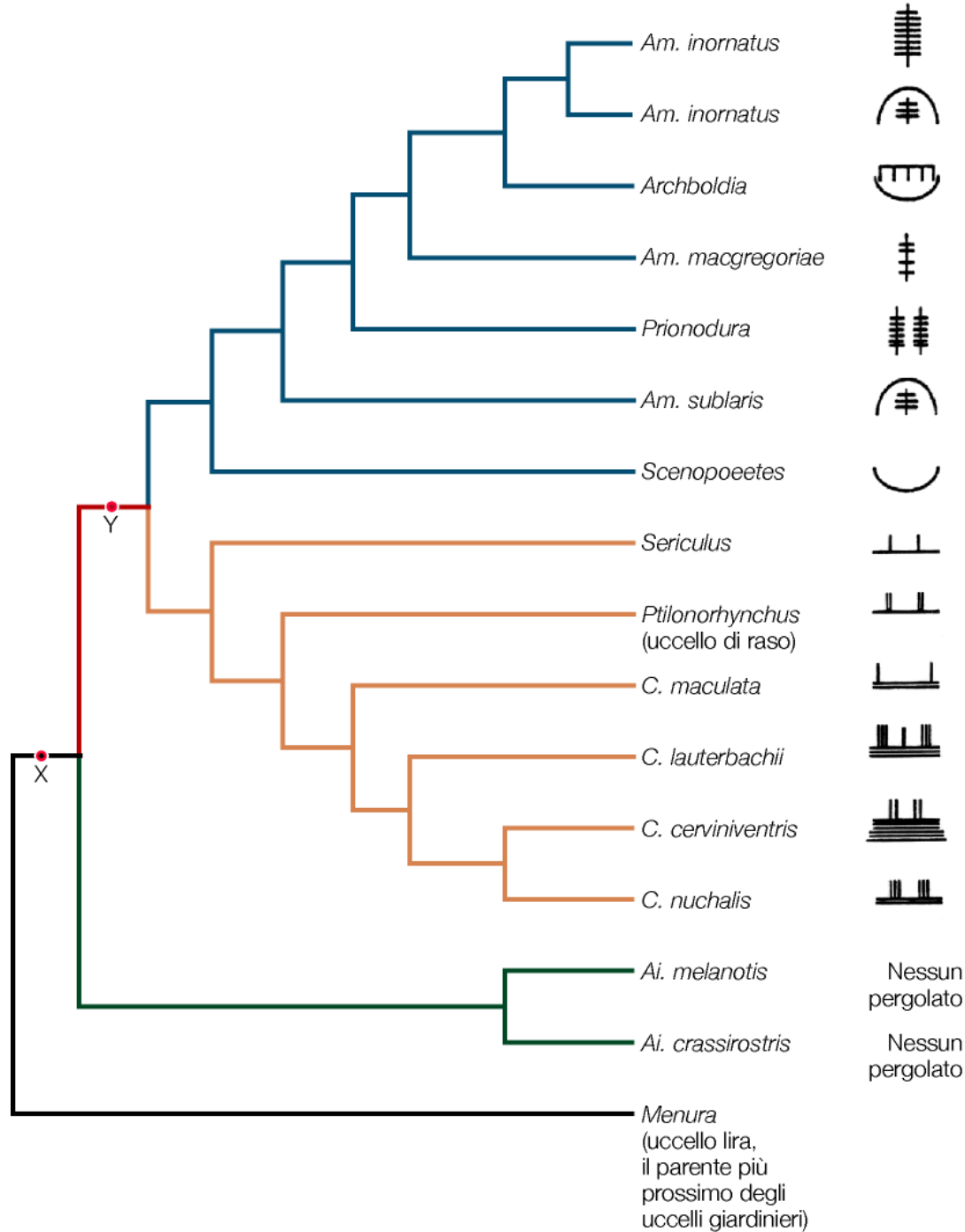


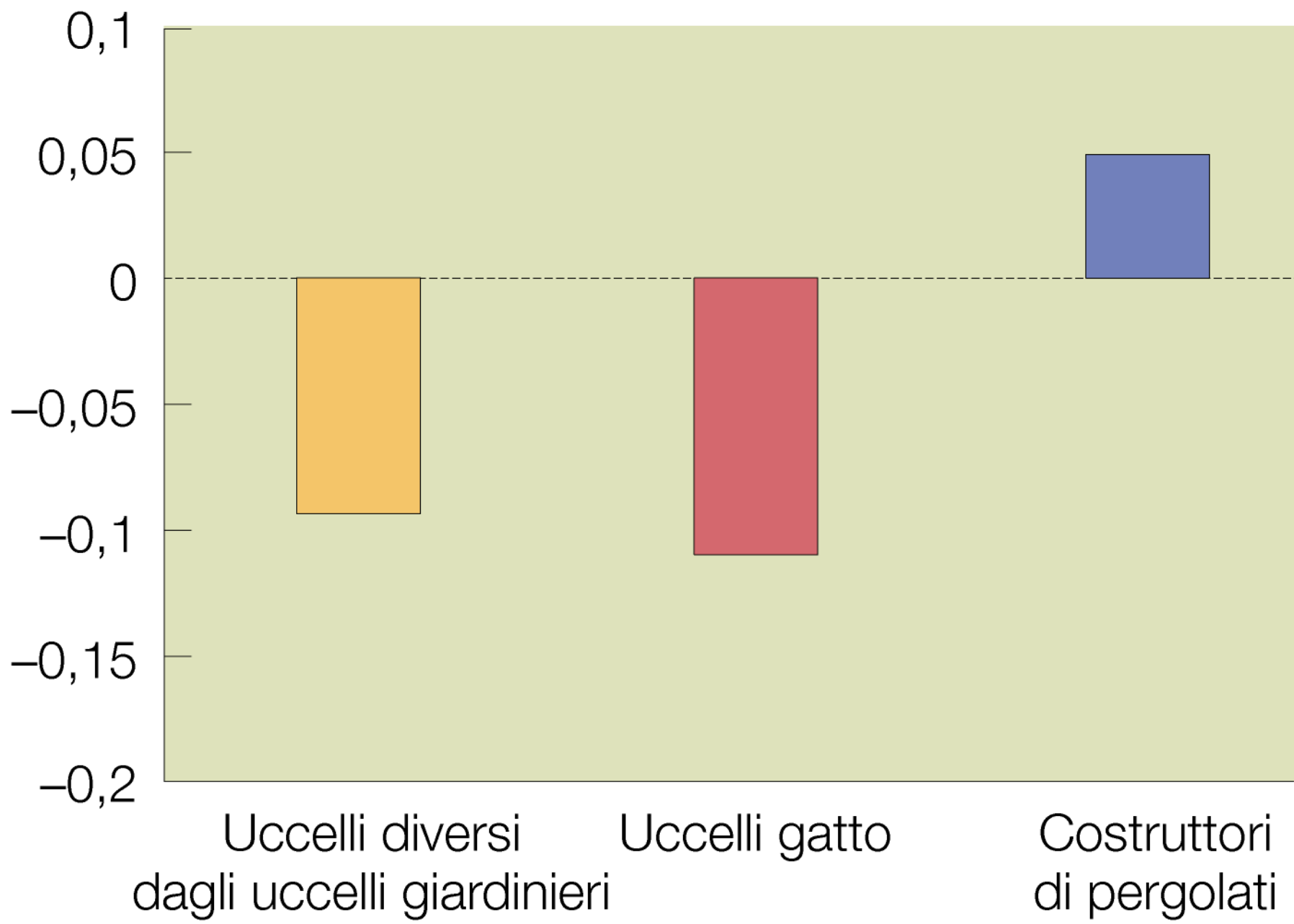
L'evoluzione del comportamento riproduttivo



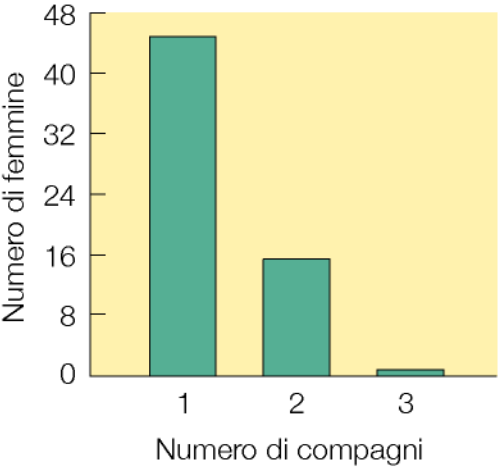




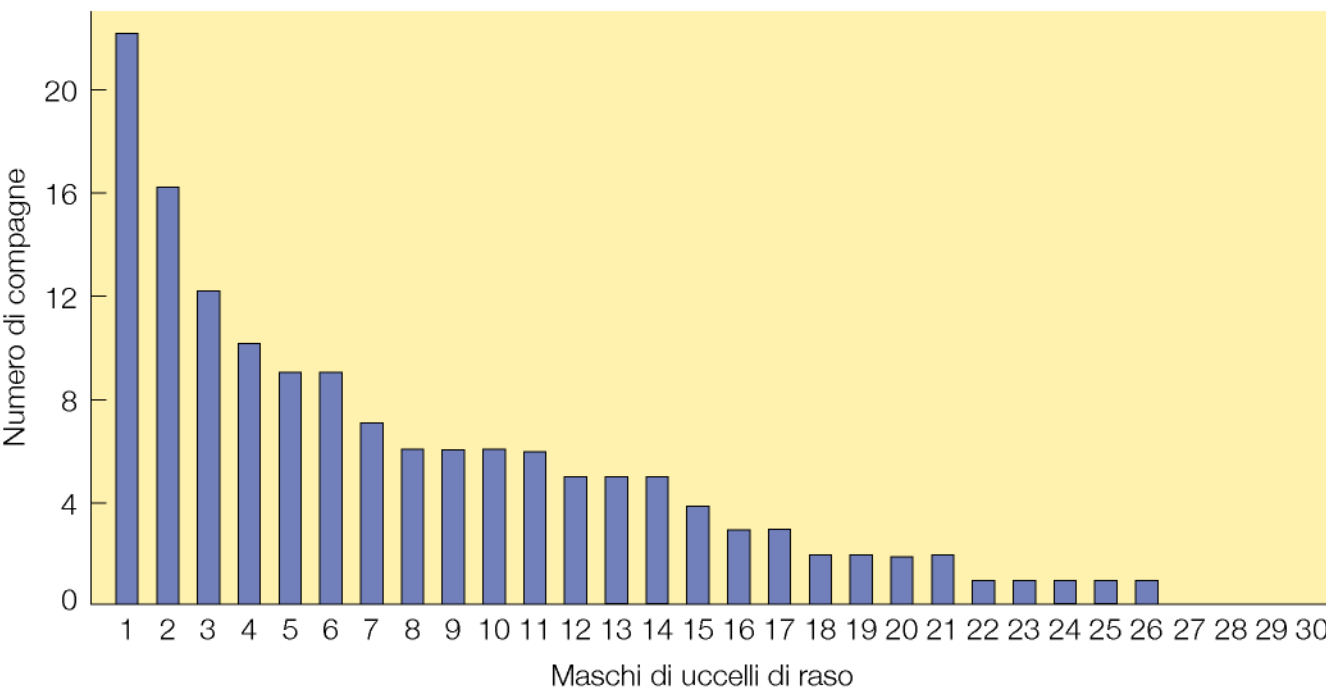
Dimensioni medie del cervello

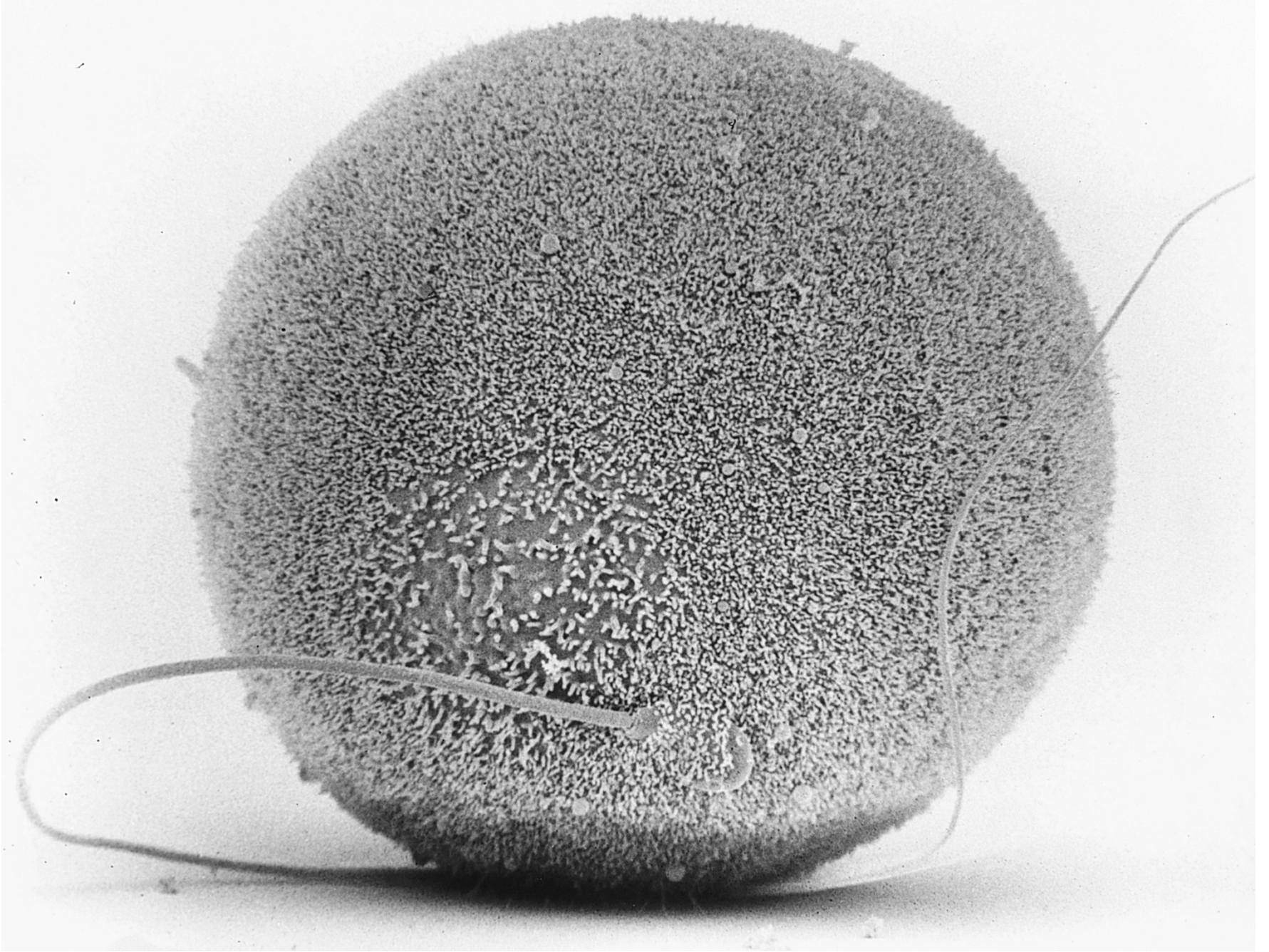


(A)

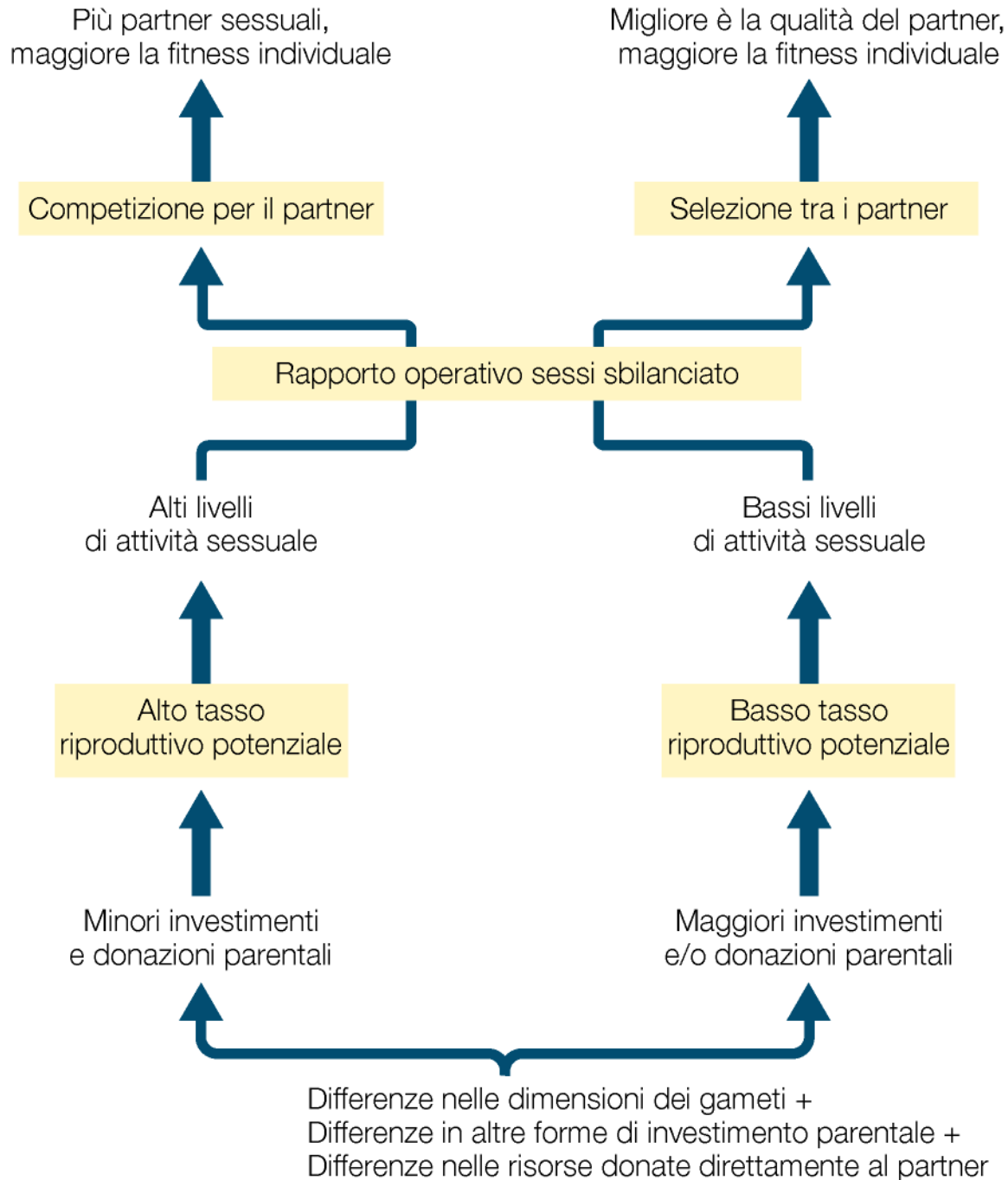


(B)



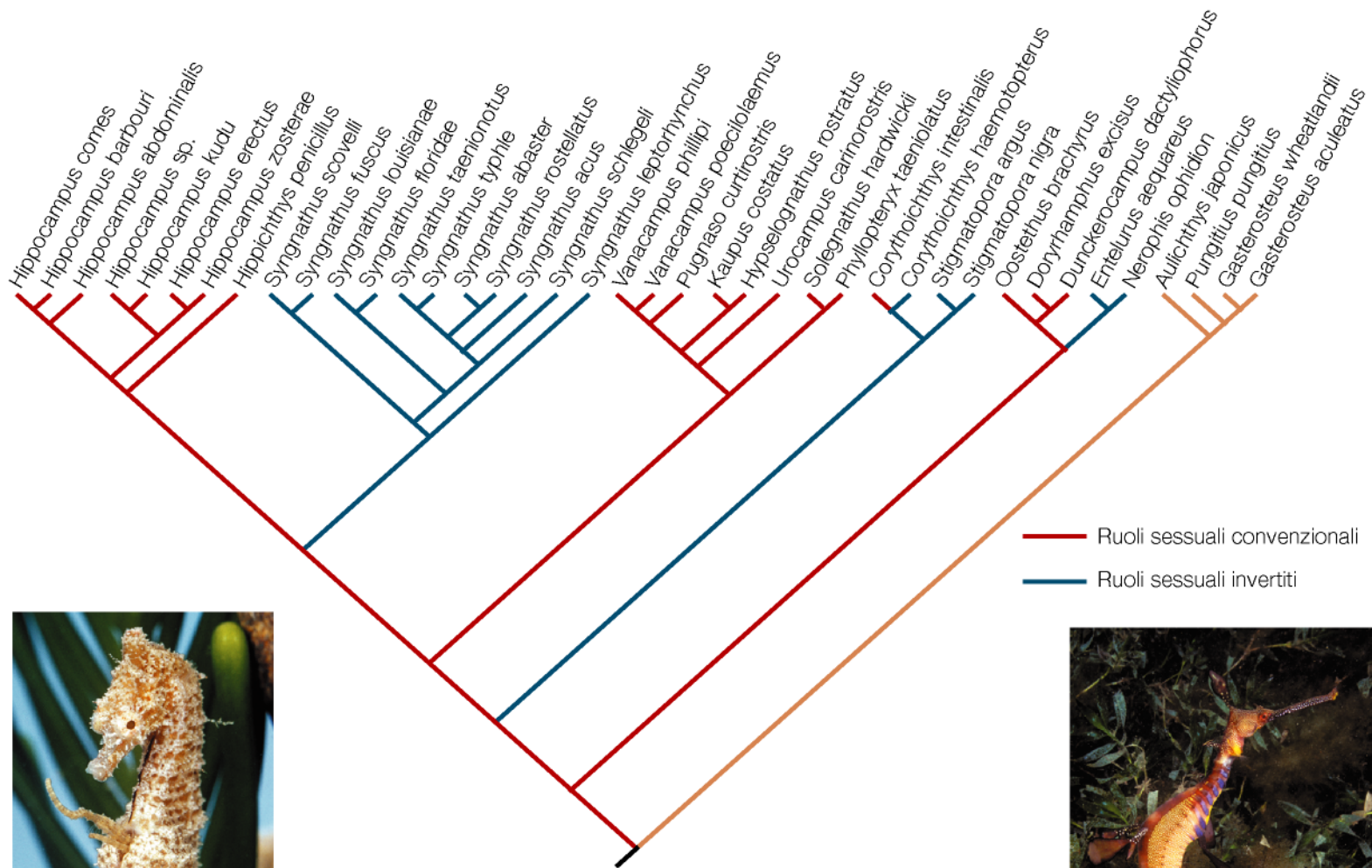






Tasca di incubazione più complessa

Tasca di incubazione più semplice



Hippocampus: nidiata nella tasca



Phyllopteryx: nidiata sulla coda

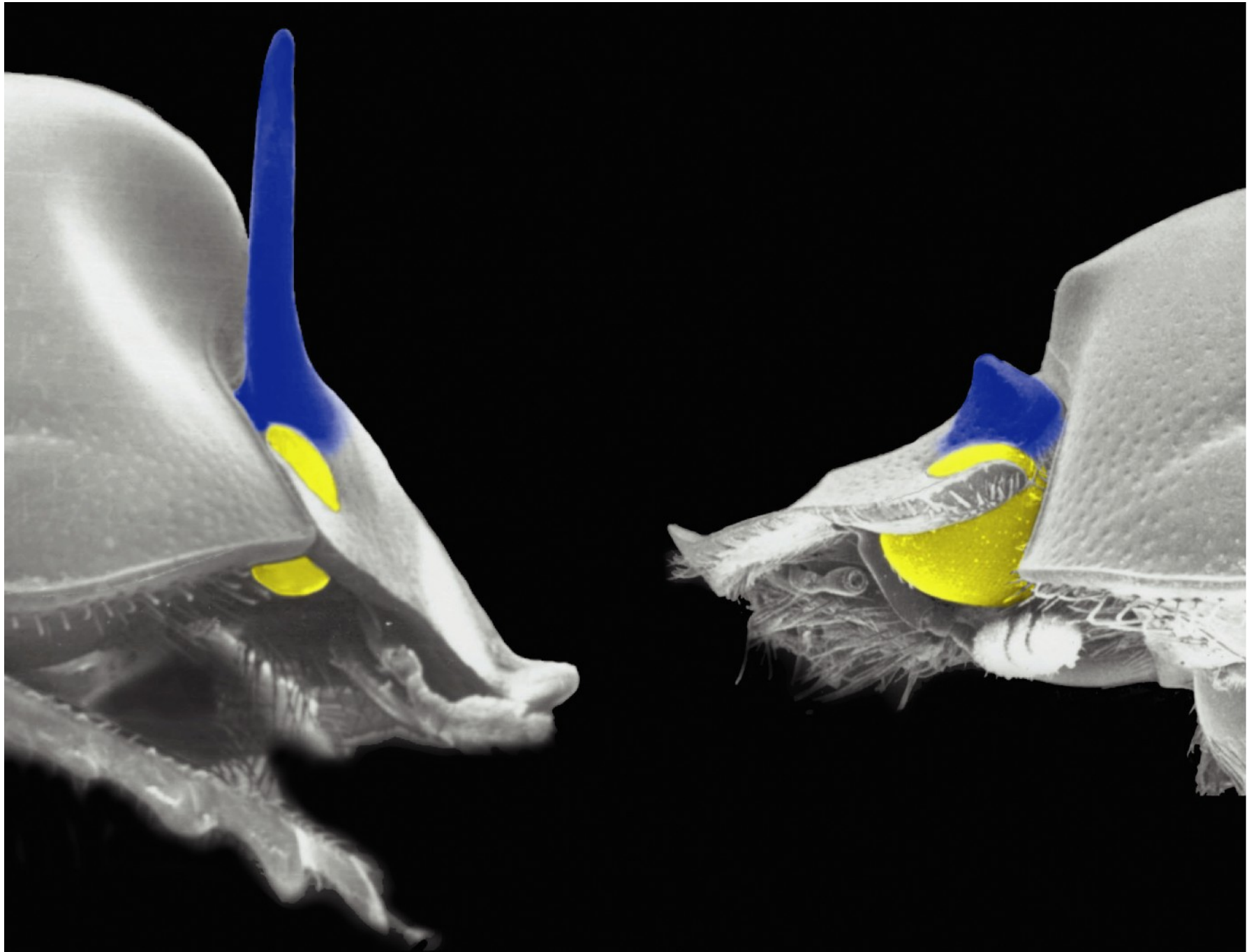


TABLE 10.1 *Effect of the relative reproductive rates of males and females on sex roles in Kawanaphila katydids*

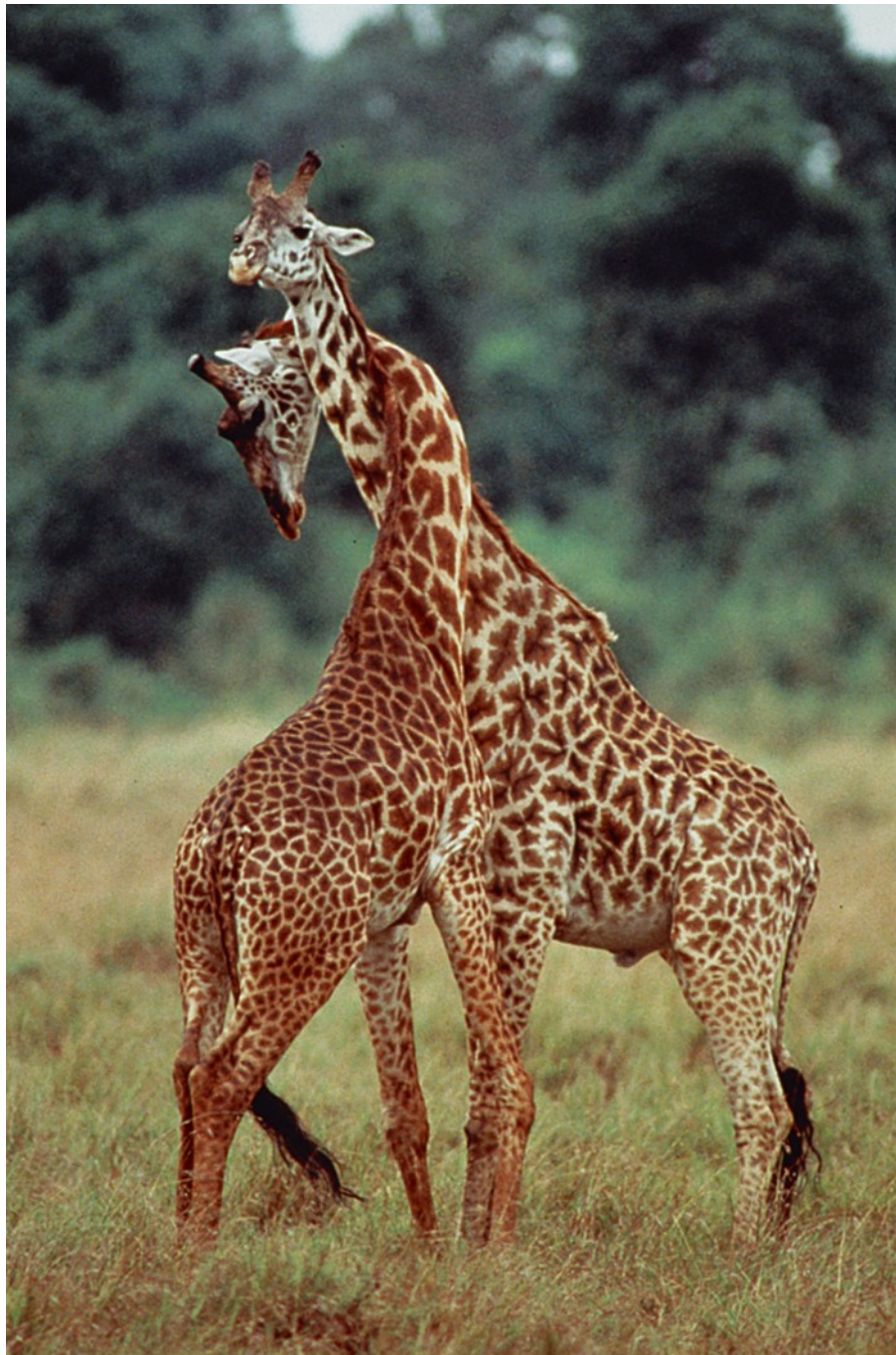
Treatment ^a	Mean number of		Proportion of interactions with	
	Calling males	Matings per female	Male choice of mates	Female competition for mates
Food scarce: Males produce spermatophores slowly	0.4	1.3	0.4	0.2
Food abundant: Males produce spermatophores quickly	6.6	0.7	< 0.1	0.0

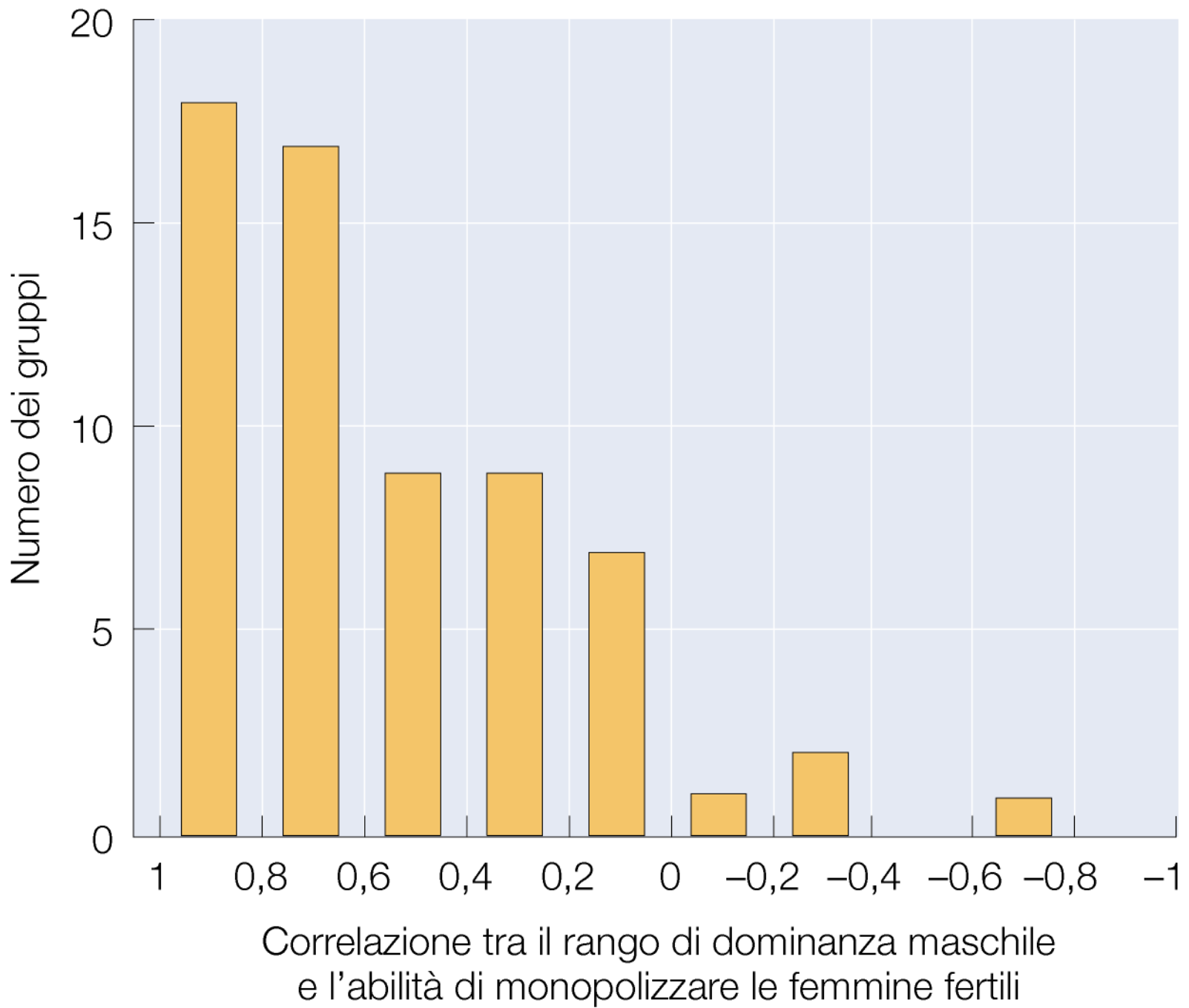
Source: Gwynne and Simmons [495]

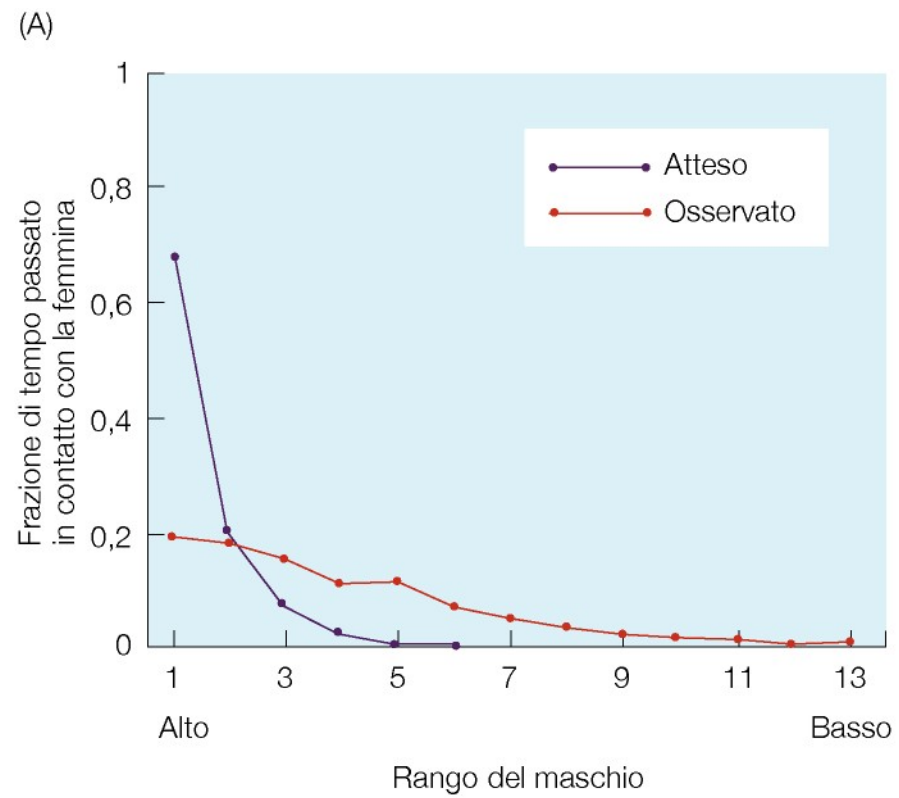
^aIn each treatment, four cages containing 24 katydids each were observed for equal periods of time.







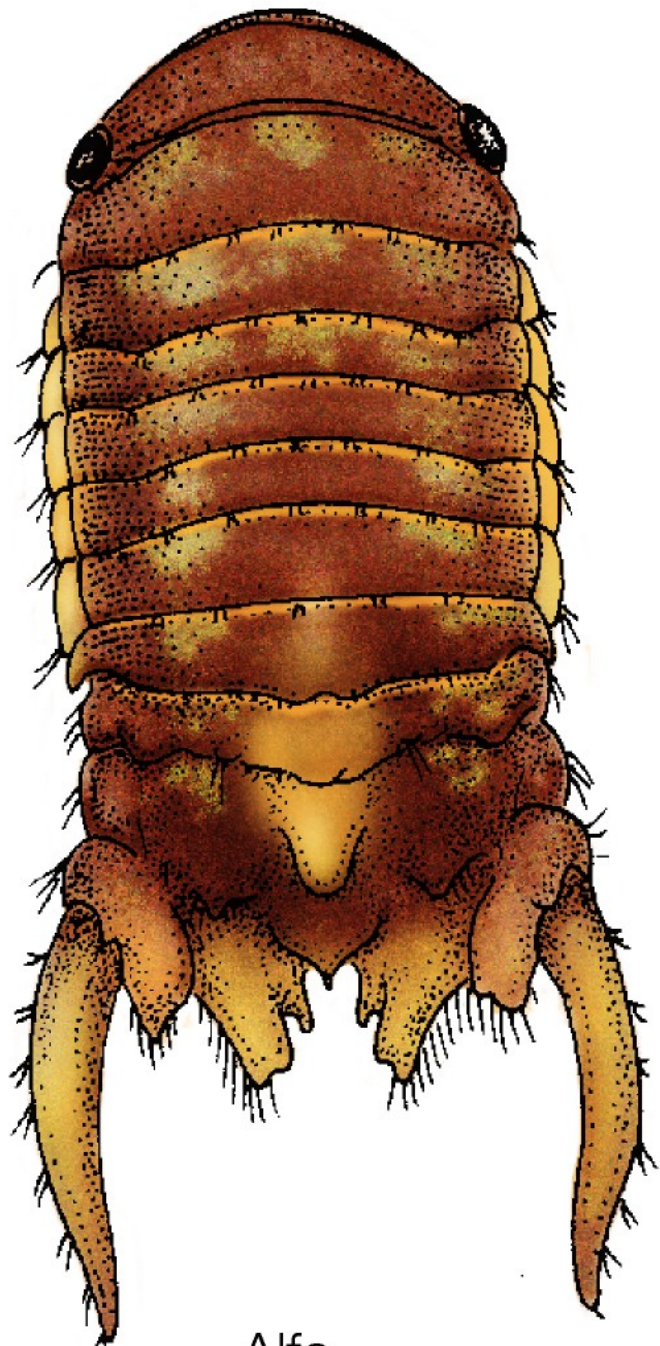




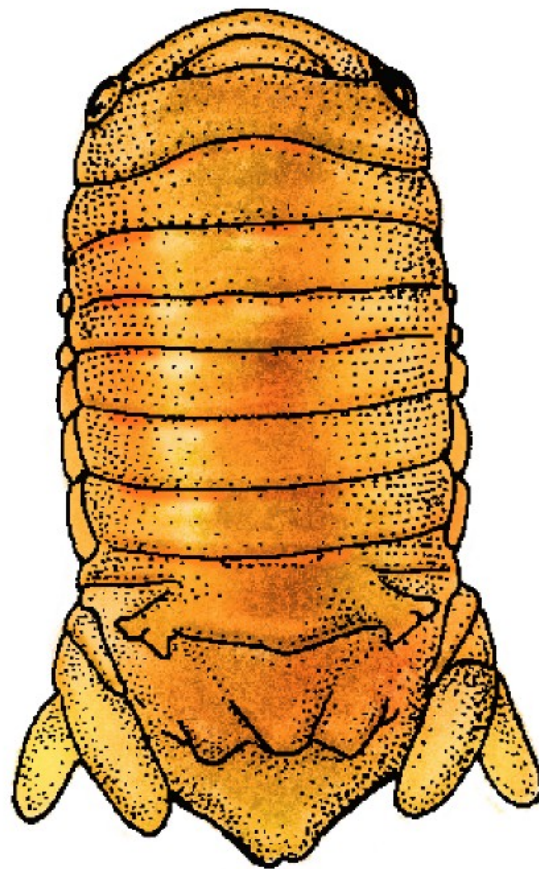




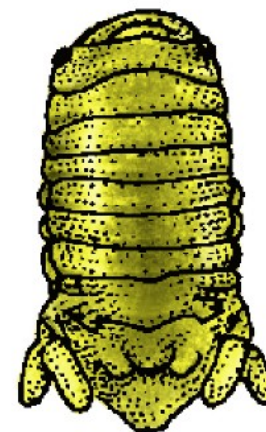




Alfa



Beta



Gamma

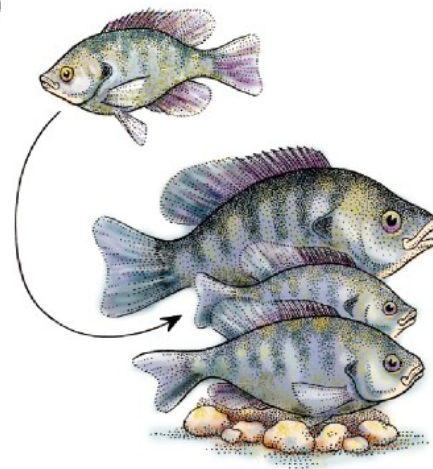
(A)



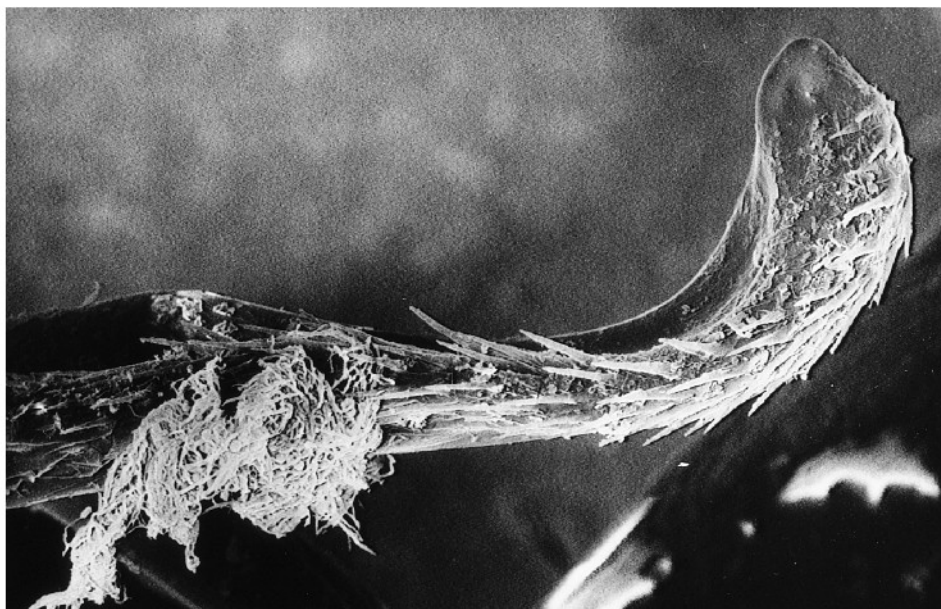
(B)



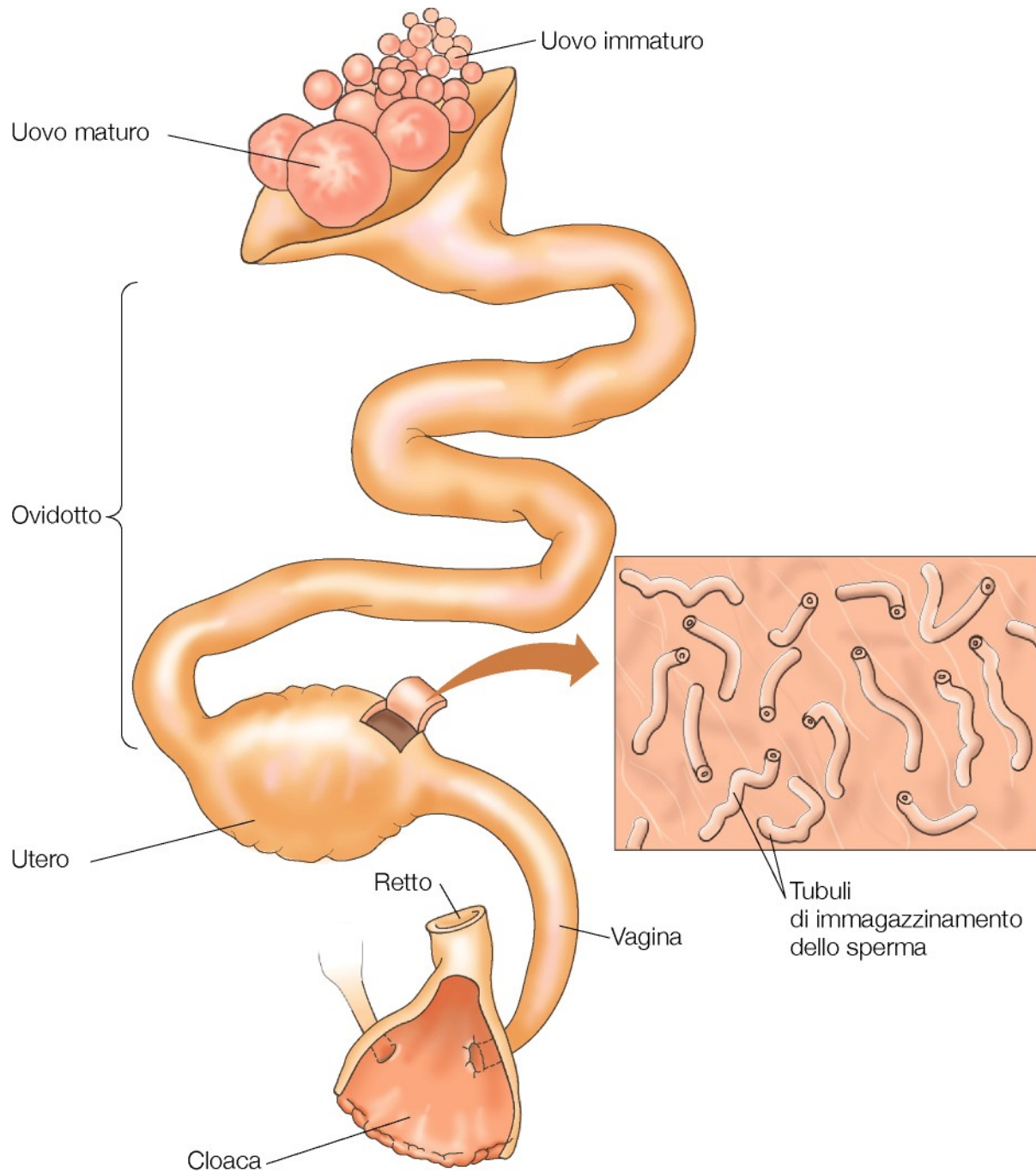
(C)



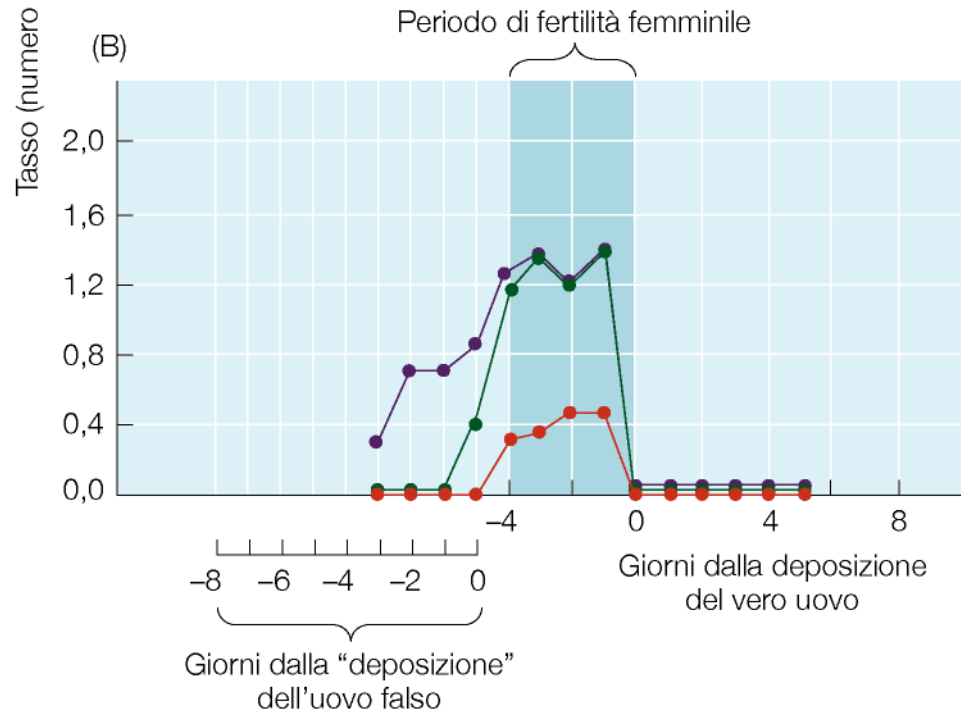
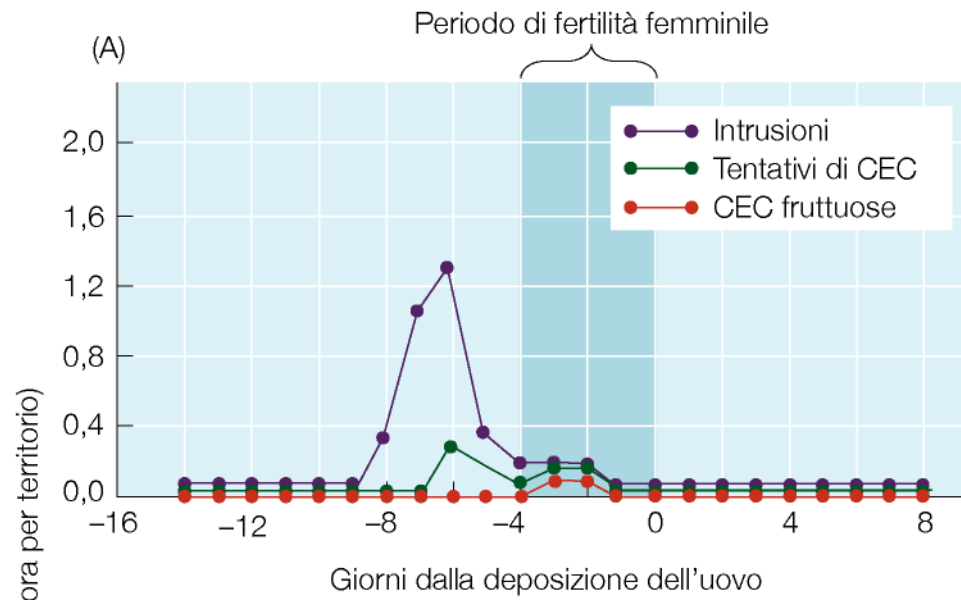


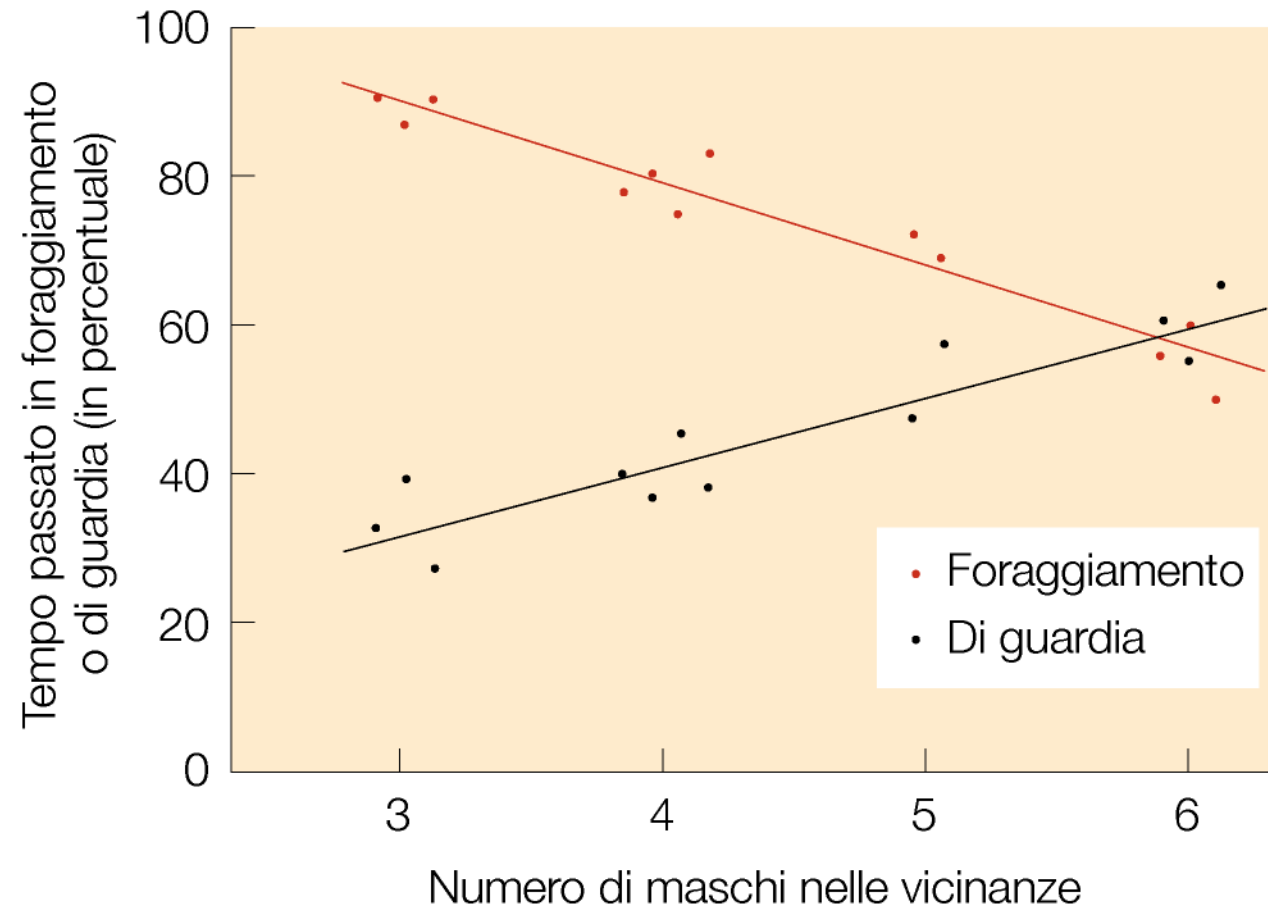


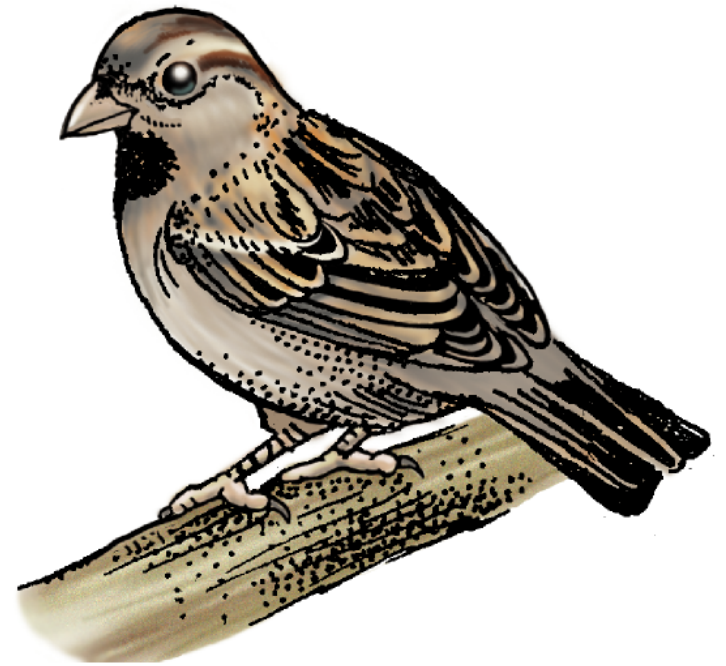
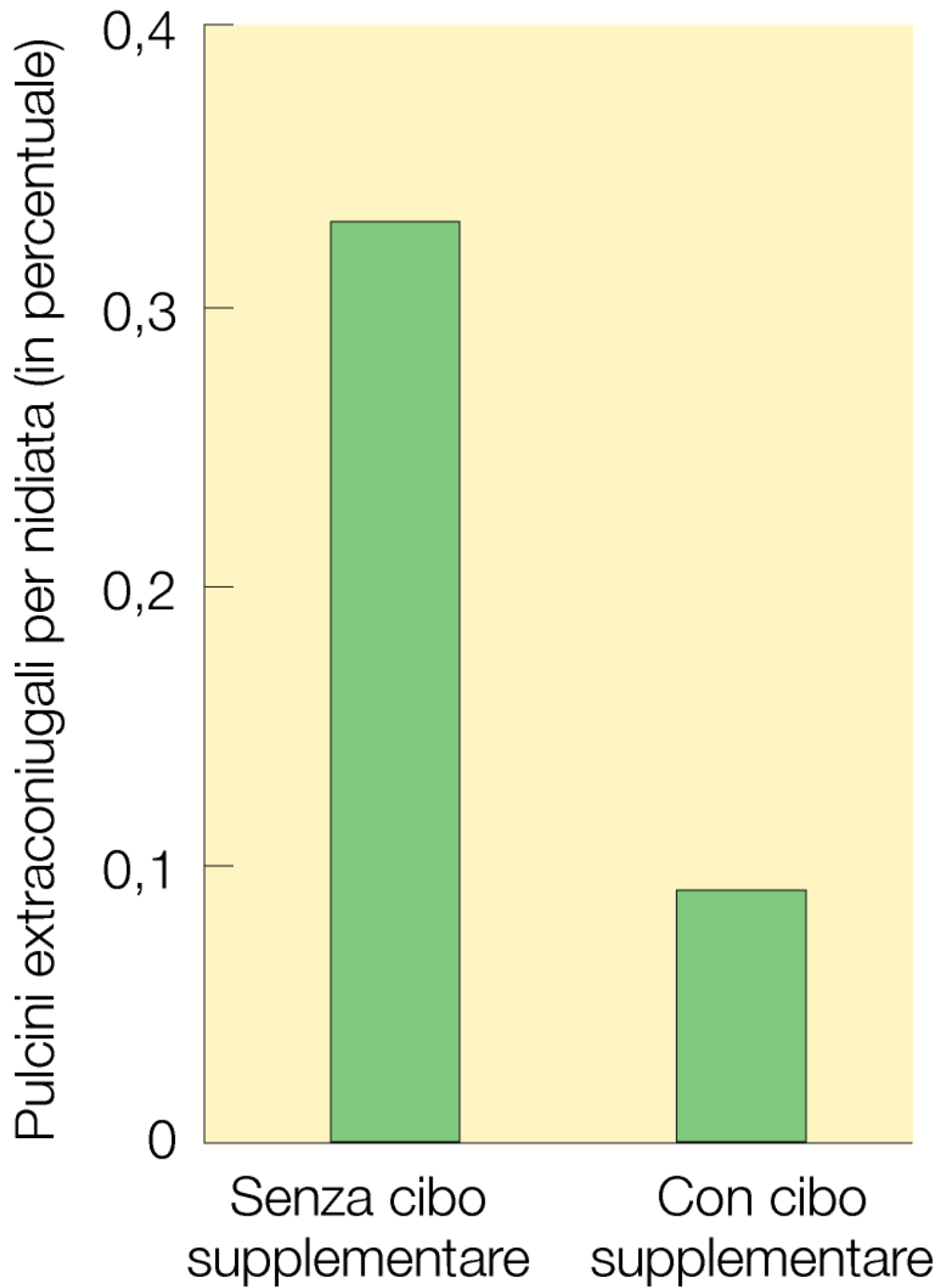






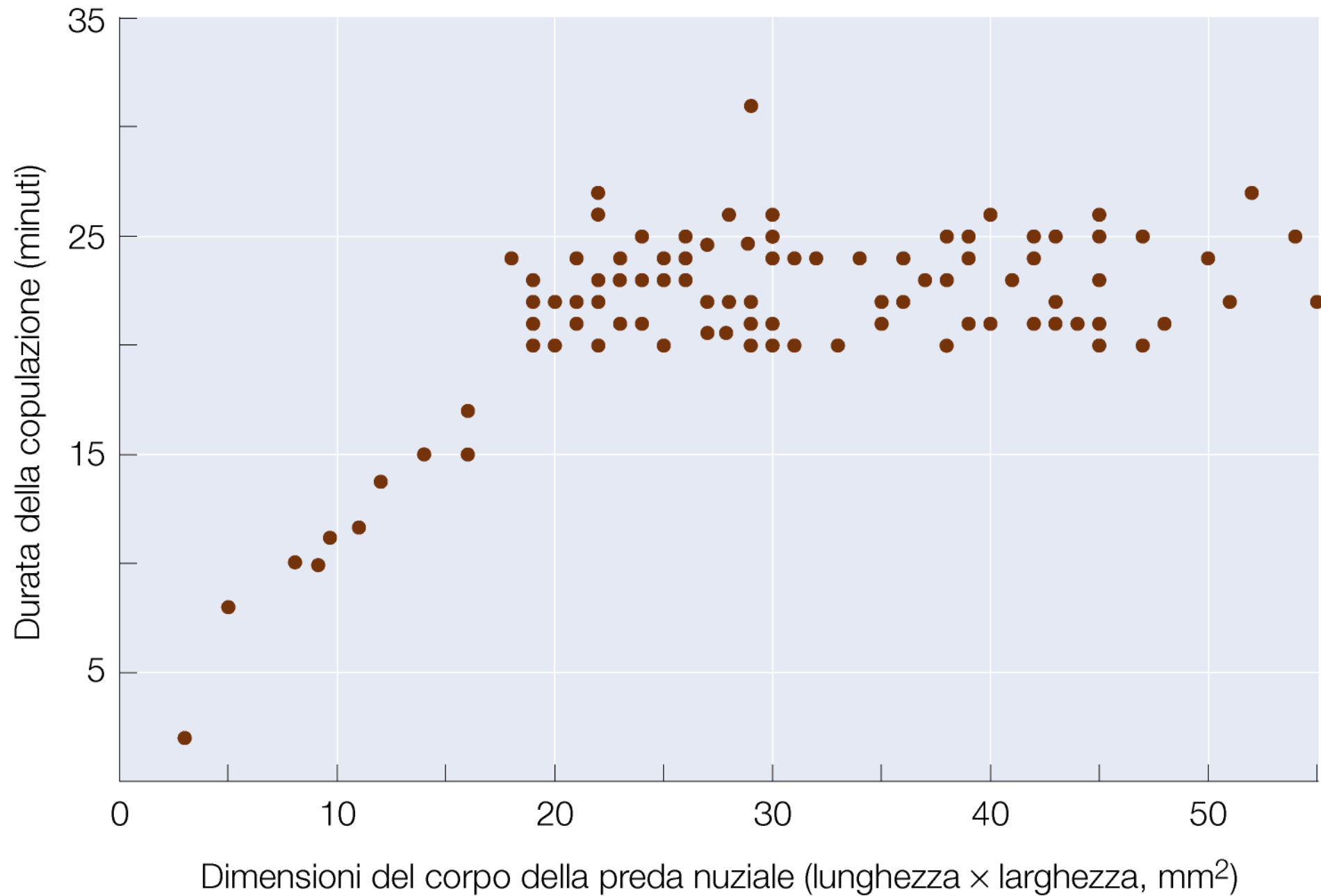




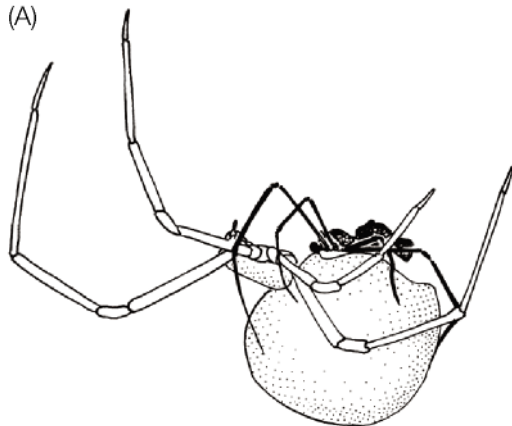


Passero domestico

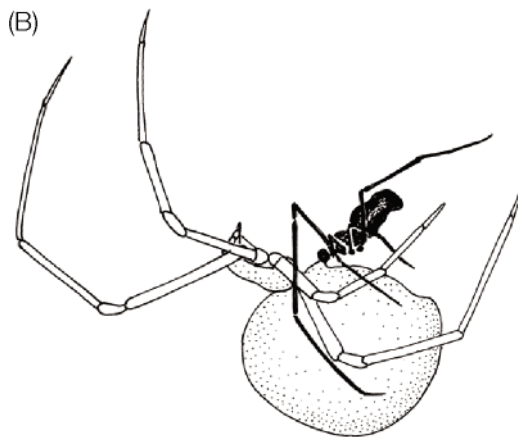




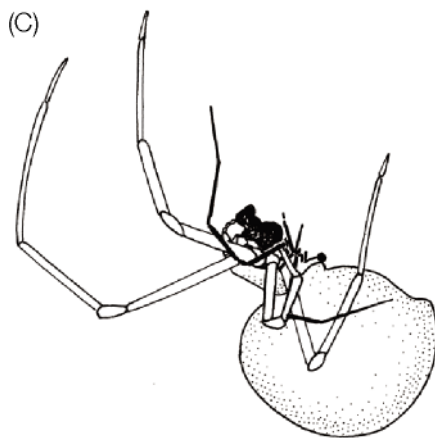
(A)



(B)

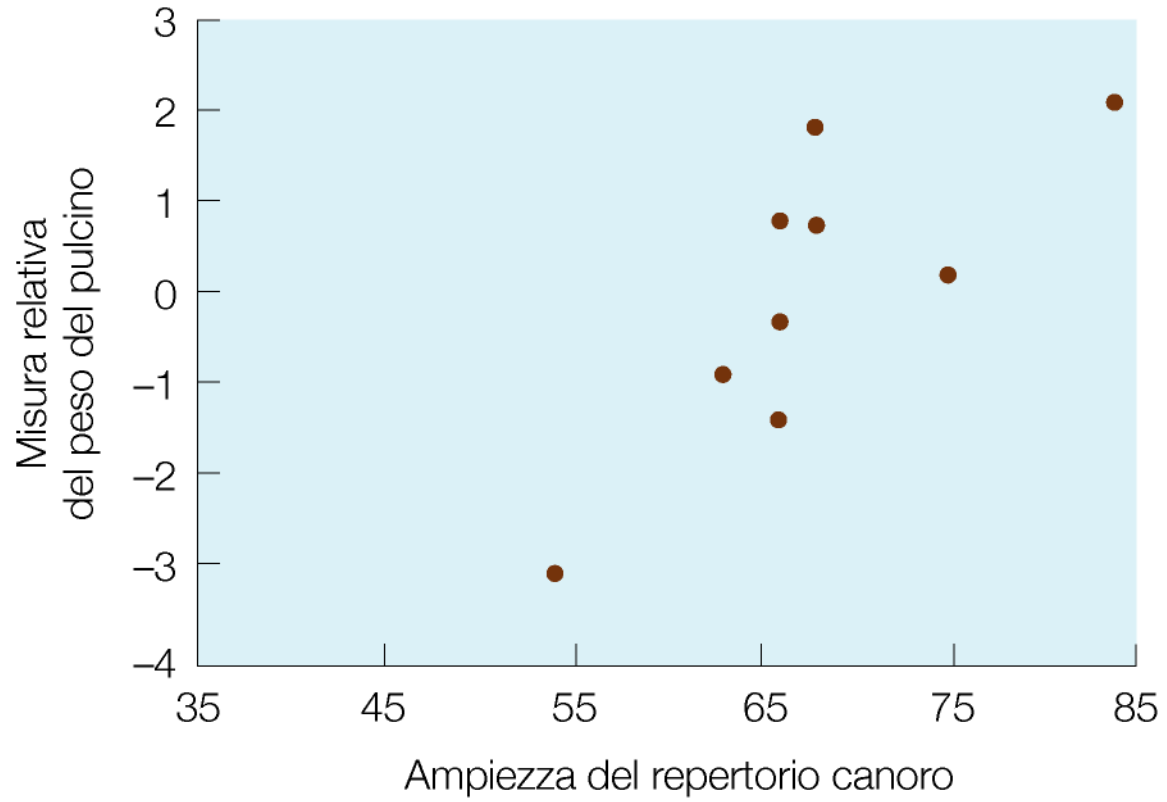


(C)



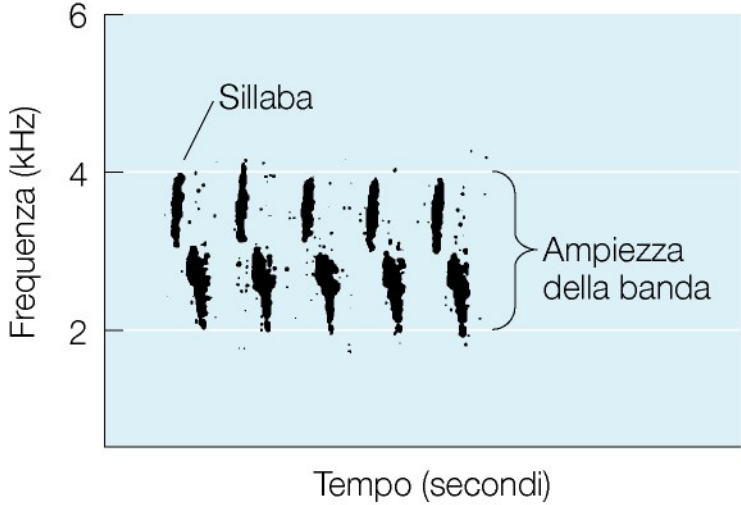


Forapaglie

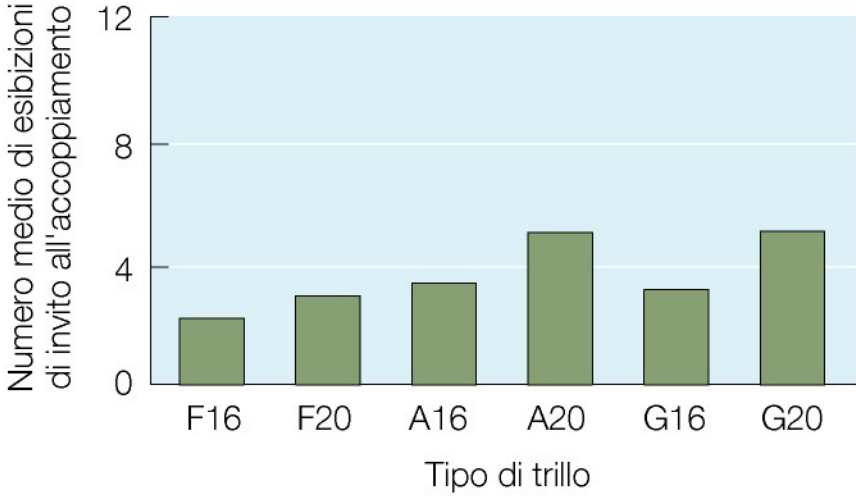




(A)



(C)



(B)

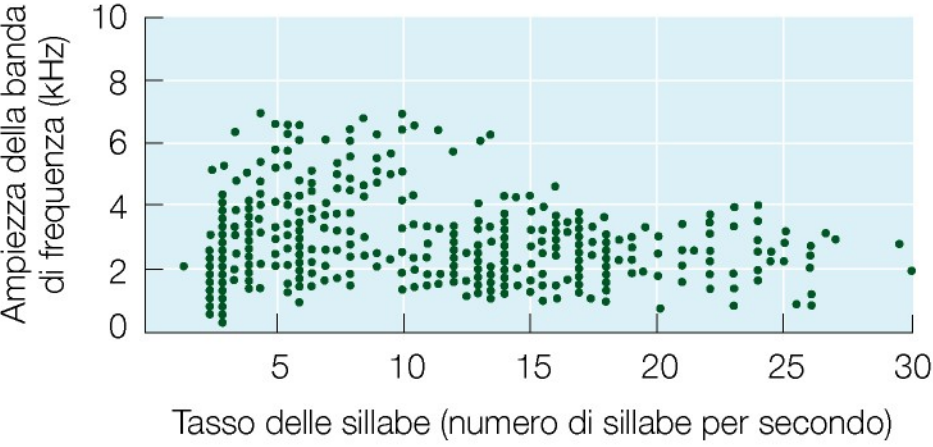
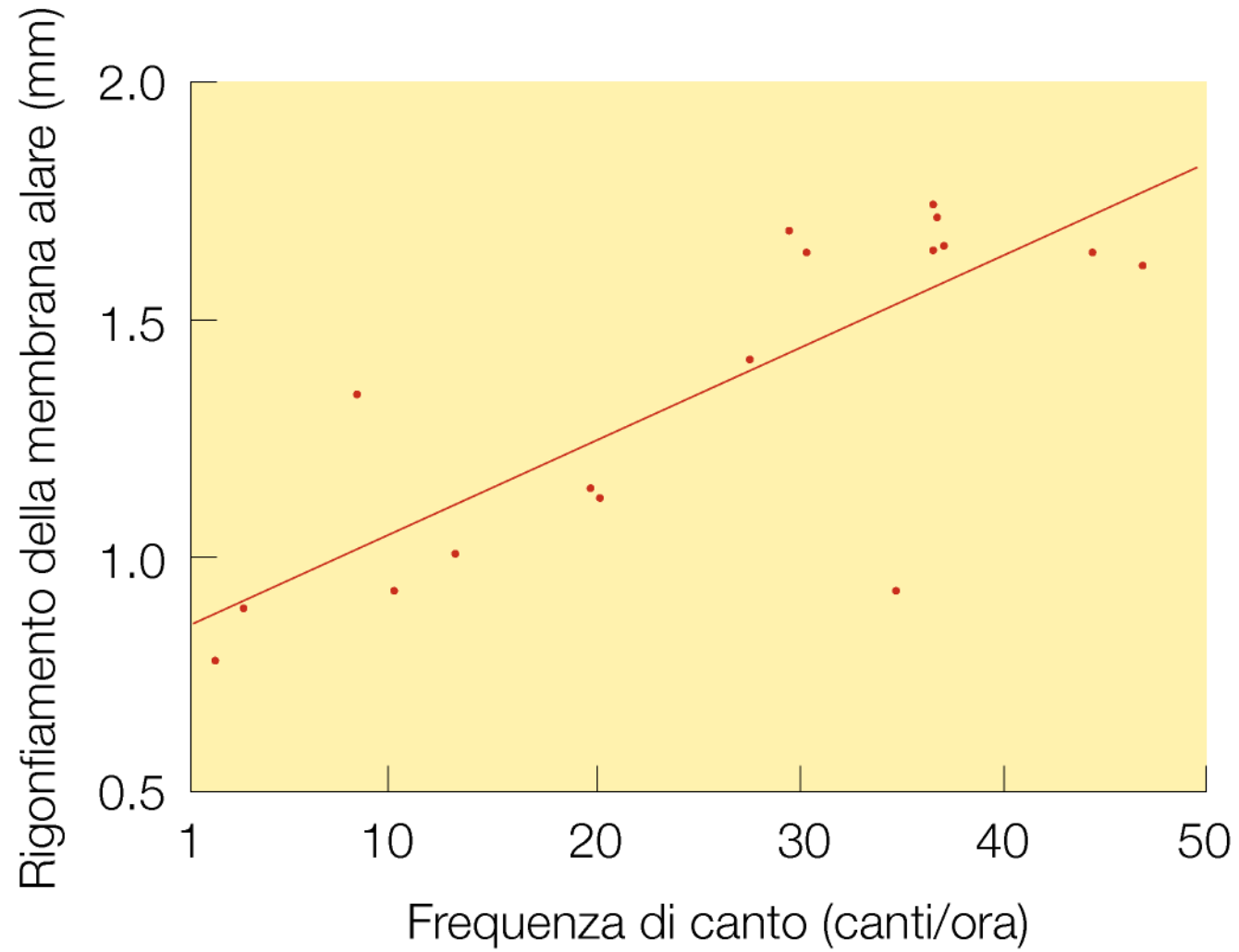
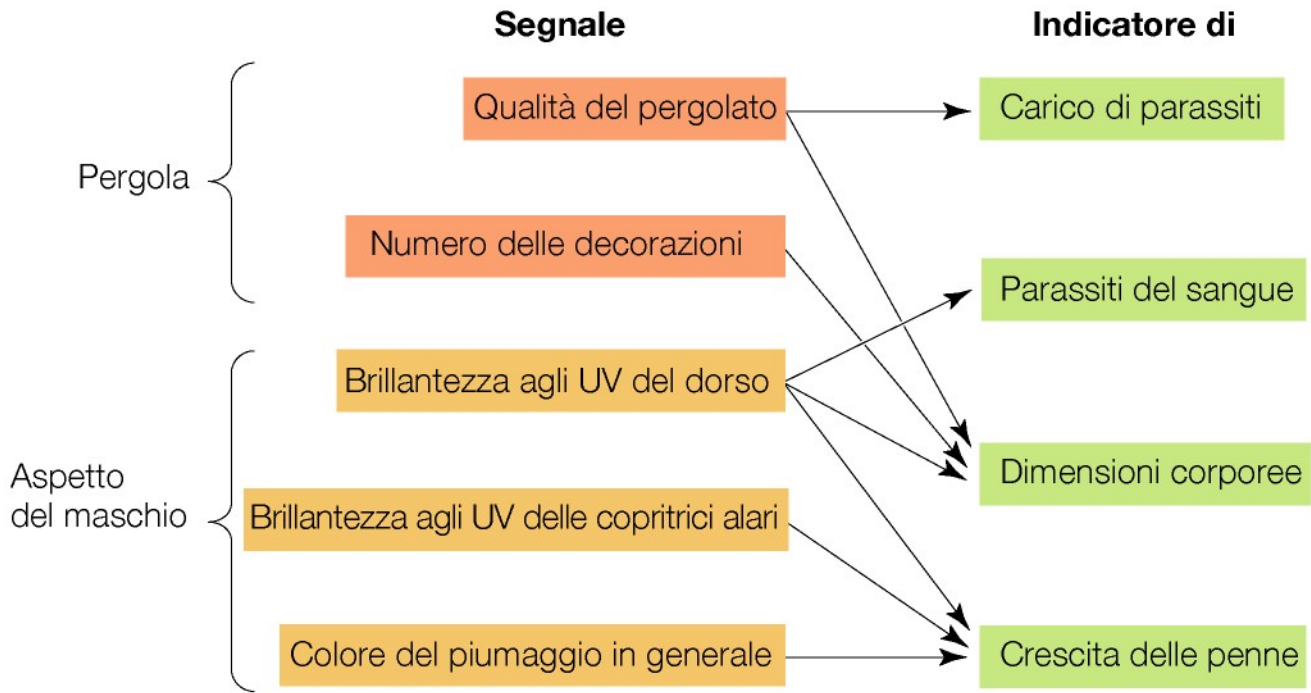


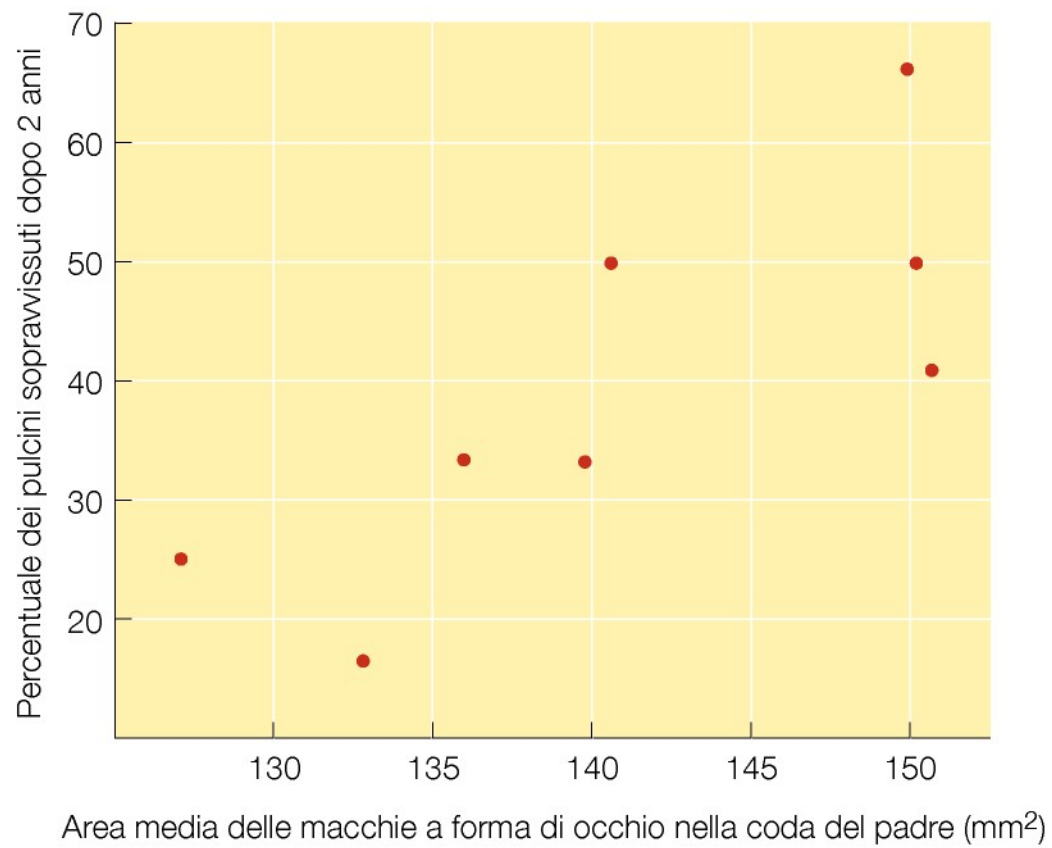
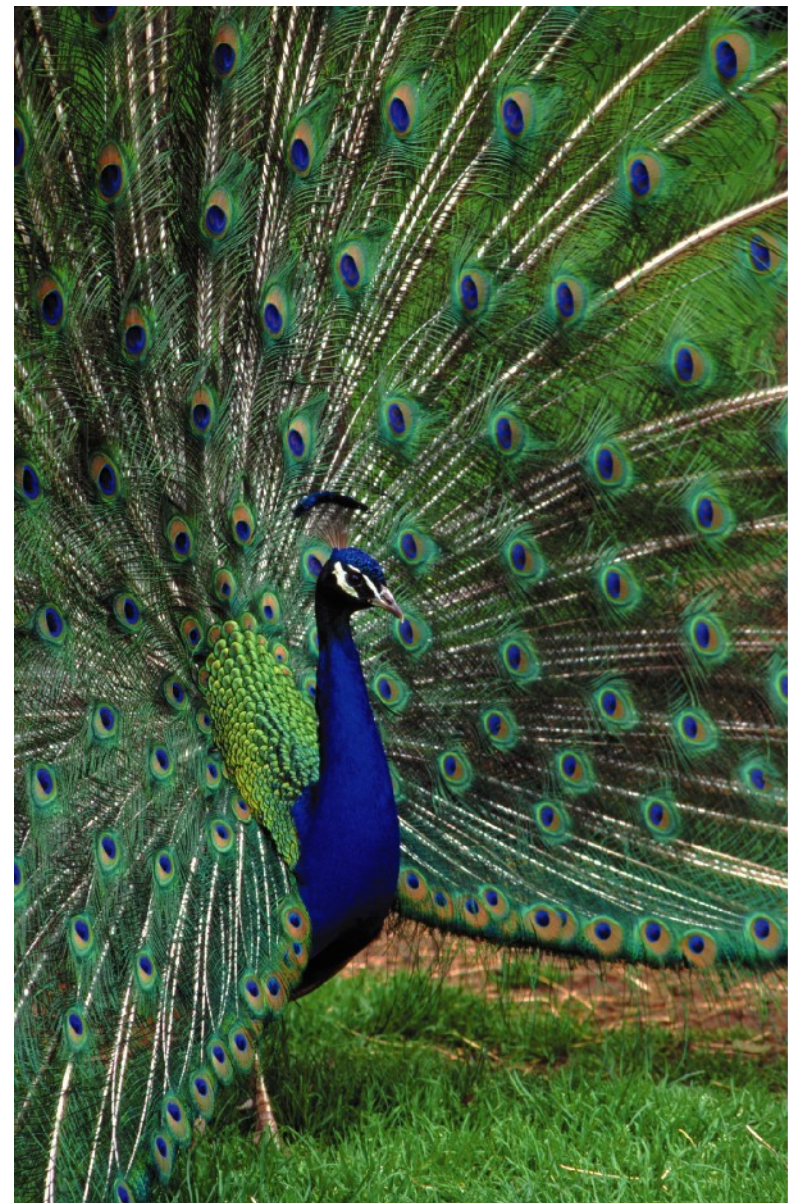


TABLE 10.4 *Four theories on why extreme male ornamentation and striking courtship displays have evolved in species in which males provide no material benefits to their mates*

Theory	Females prefer trait that is	Primary adaptive value to choosy females
Healthy mate	Indicative of male health	Females (and offspring) avoid contagious diseases and parasites
Good genes	Indicative of male viability	Offspring may inherit the viability advantages of their father
Runaway selection	Sexually attractive	Sons inherit trait that makes them sexually attractive; daughters inherit the majority mate preference
Chase-away selection	Exploitative of preexisting sensory biases	No benefit received by female







Selezione di disponibilità sul sistema sensoriale femminile

Attrazione femminile per un carattere maschile che è assente
(inclinazione preesistente)

Sfruttamento
sensoriale
iniziale

La mutazione produce un carattere maschile di esibizione rudimentale
(sfruttamento)

La fitness femminile diminuisce

Esagerazione dell'esibizione
maschile

La soglia femminile
per l'accoppiamento cresce

L'attrazione maschile diminuisce

