

John ALCOCK

ETOLOGIA

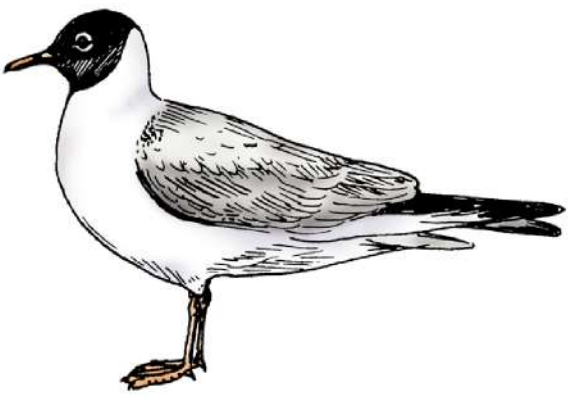
Terza Edizione

Capitolo 6:

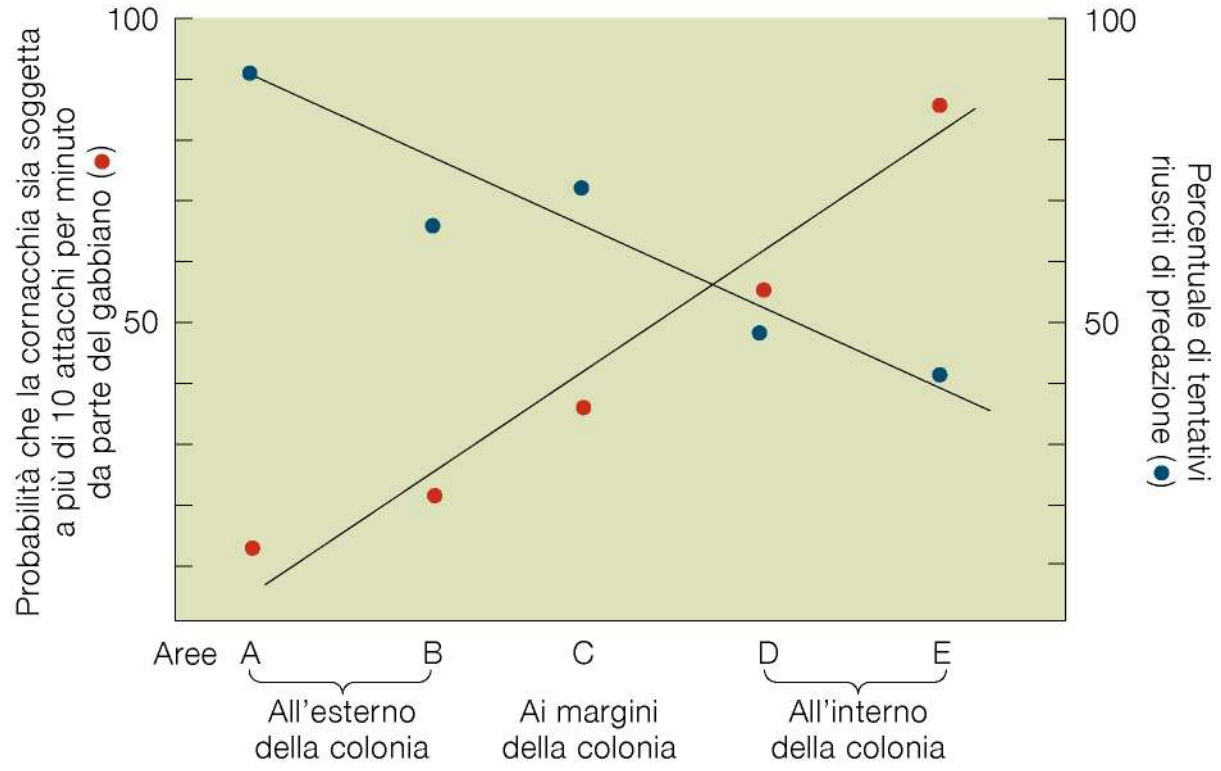
Adattamenti comportamentali
per la sopravvivenza

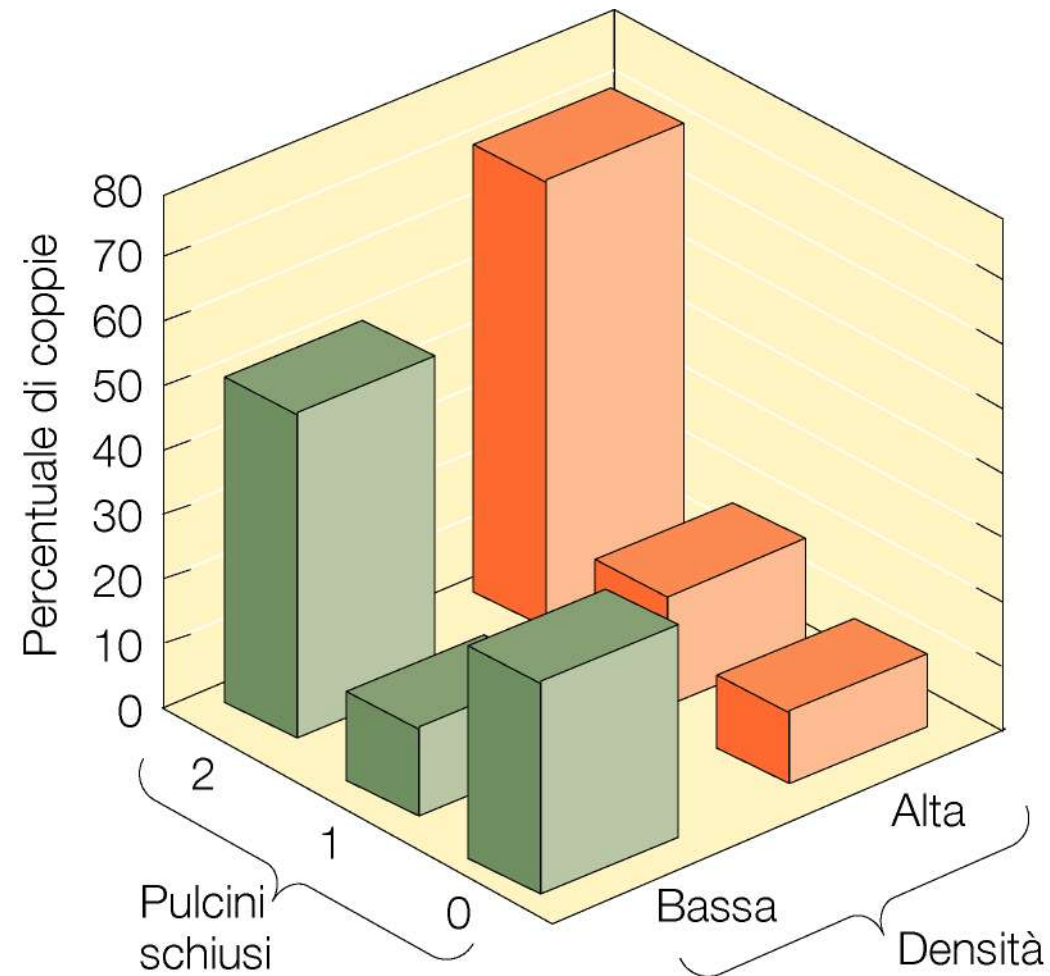






Gabbiano comune

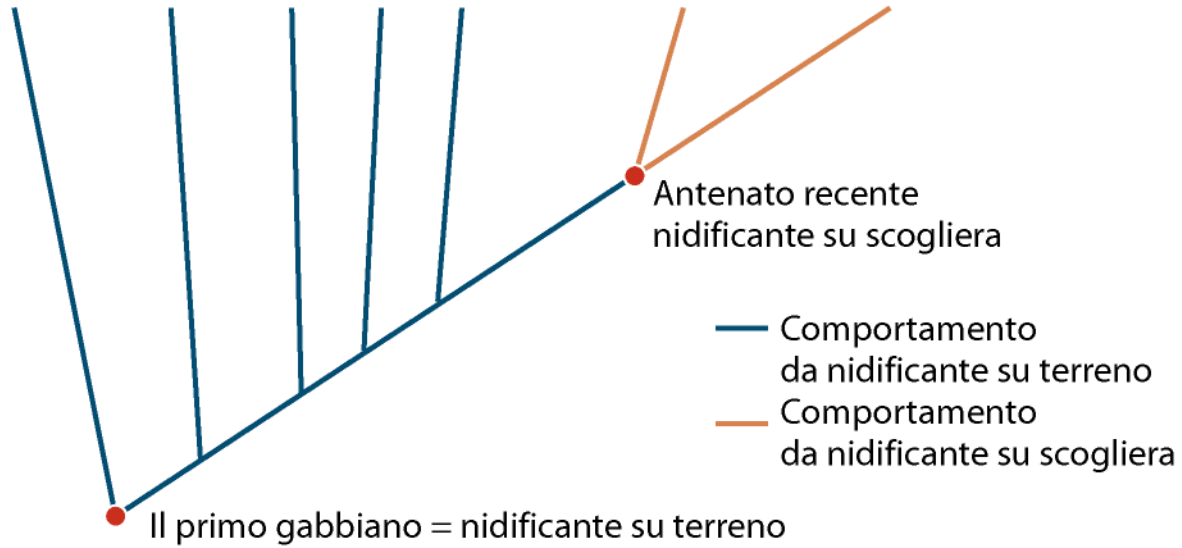




Labbo maggiore

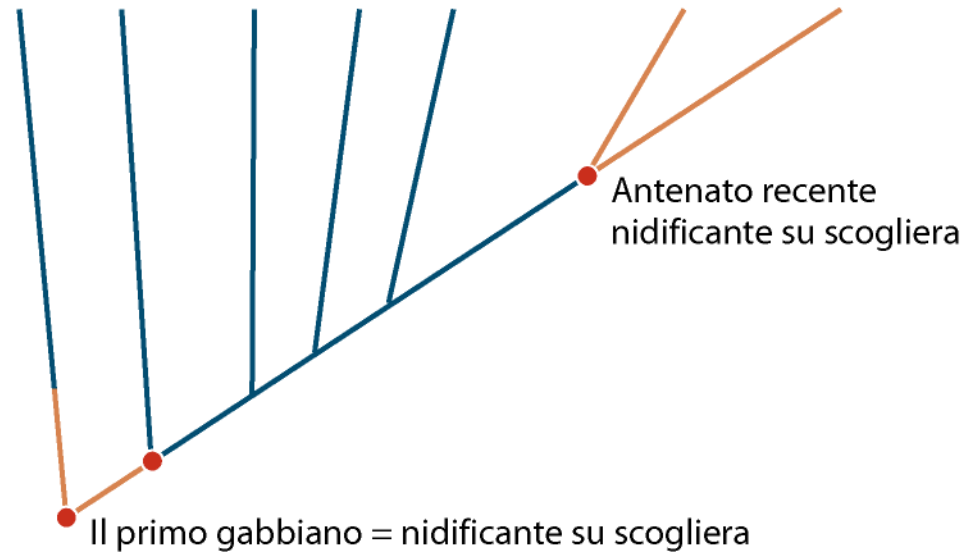
(A) Gabbiani attuali
nidificanti su terreno

Gabbiani attuali
nidificanti su scogliera



(B) Gabbiani attuali
nidificanti su terreno

Gabbiani attuali
nidificanti su scogliera





Evoluzione convergente

Antenati distinti
Comportamento
di mobbing condiviso

Evoluzione divergente

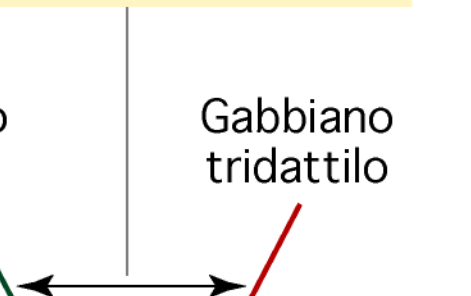
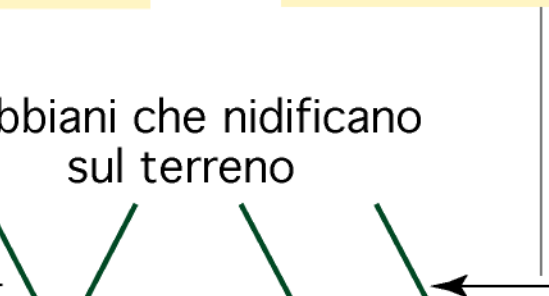
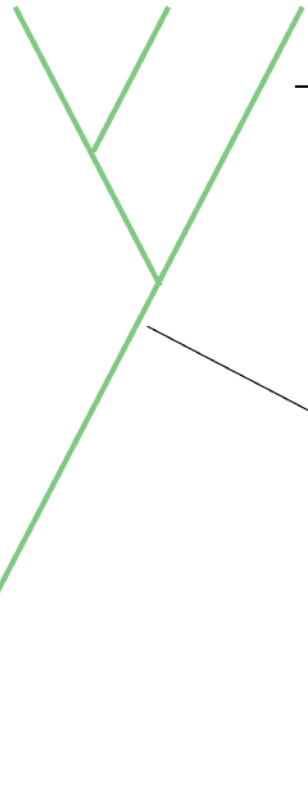
Antenato condiviso
Comportamento divergente

Rondine aliruvide
ed altre rondini
con nidi solitari

Topino
ed altre
rondini coloniali

Gabbiani che nidificano
sul terreno

Gabbiano
tridattilo

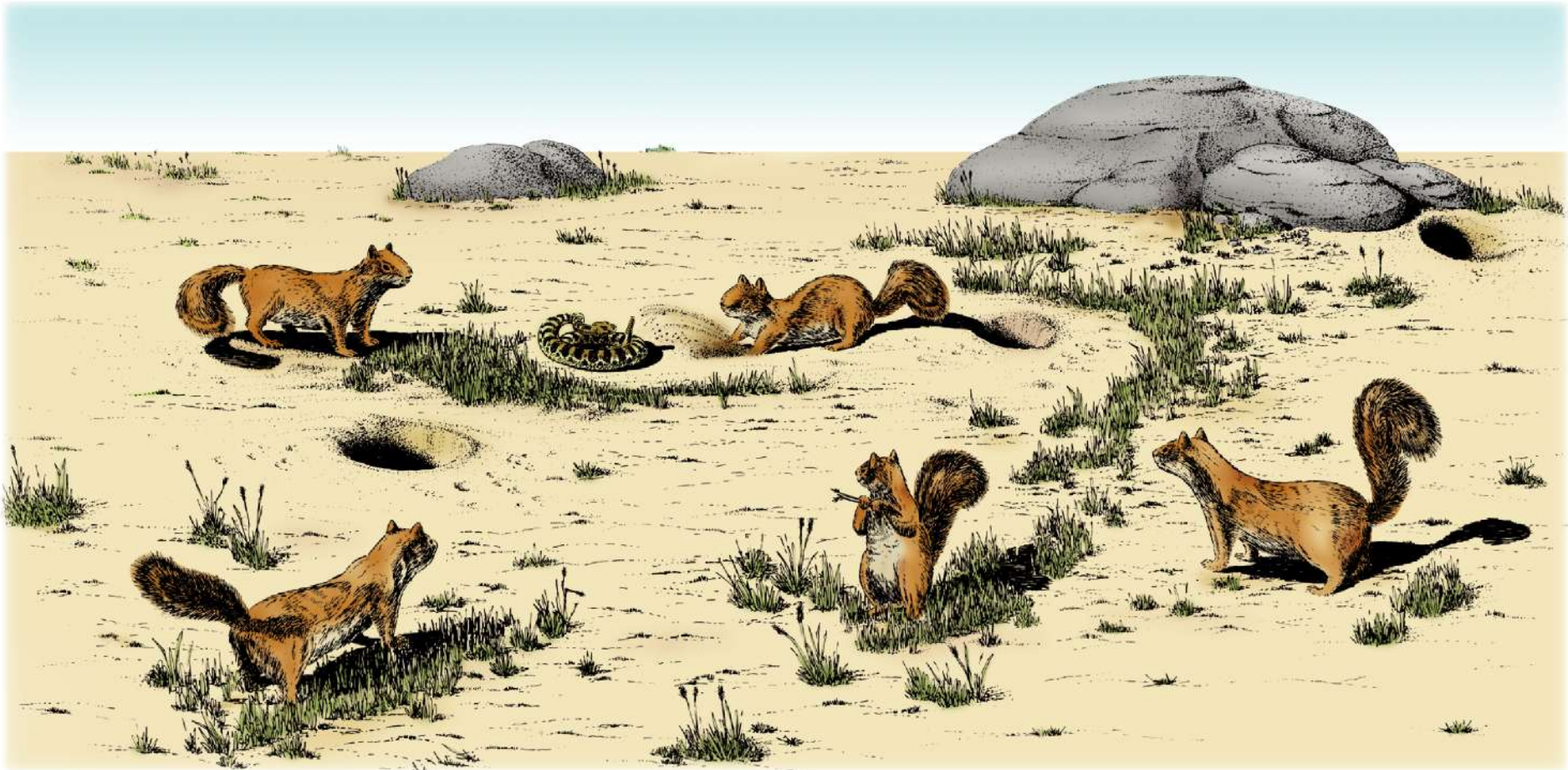


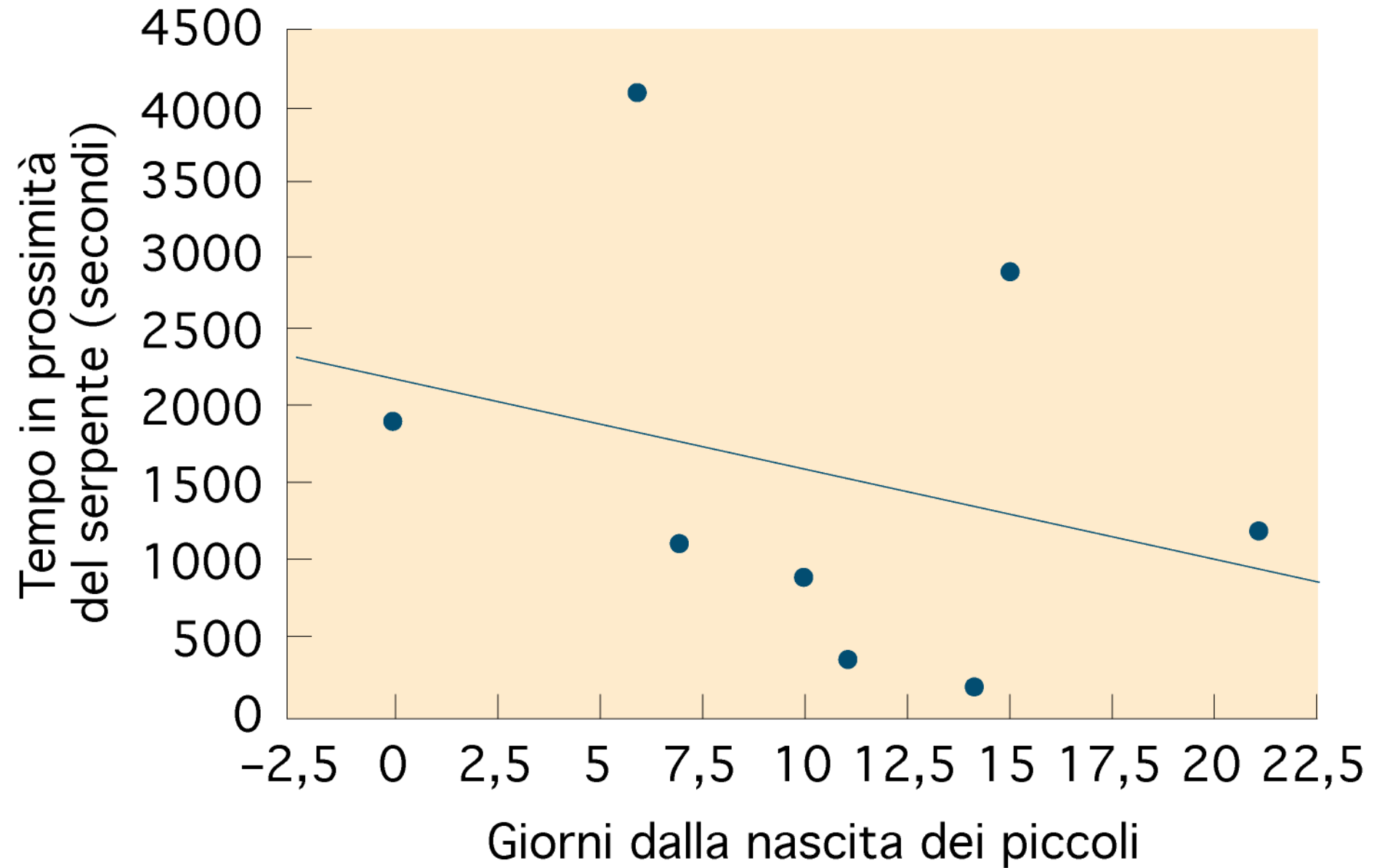
Pressione
selettiva
simile

Pressioni
selettive
differenti

Albero filogenetico delle rondini

Albero filogenetico dei gabbiani

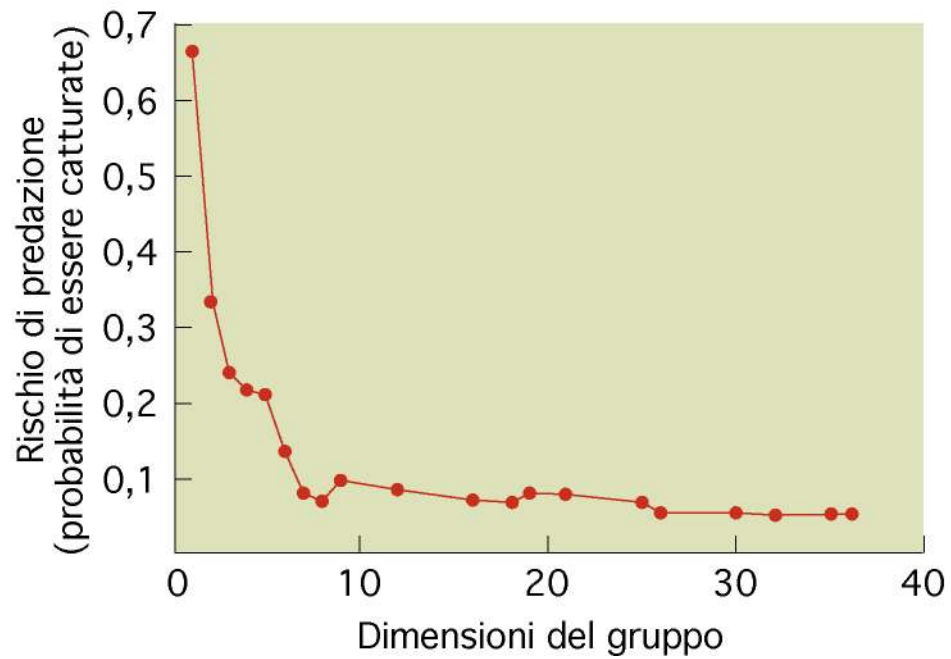


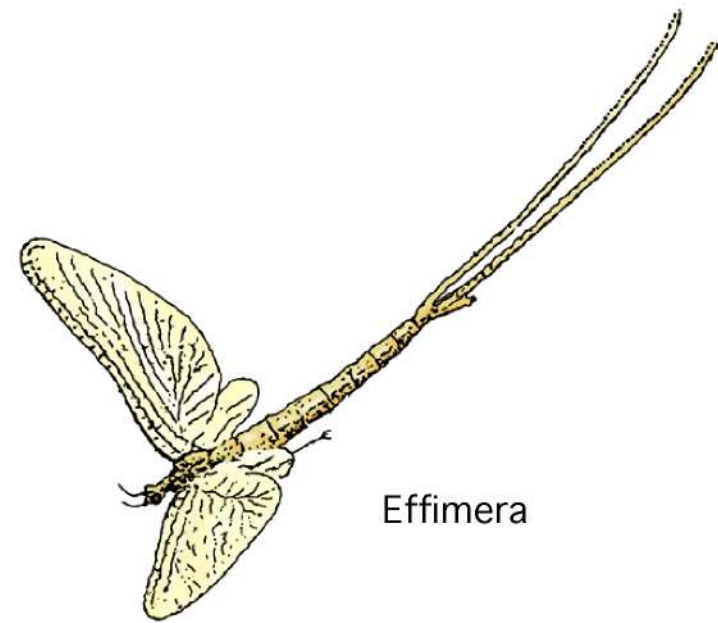
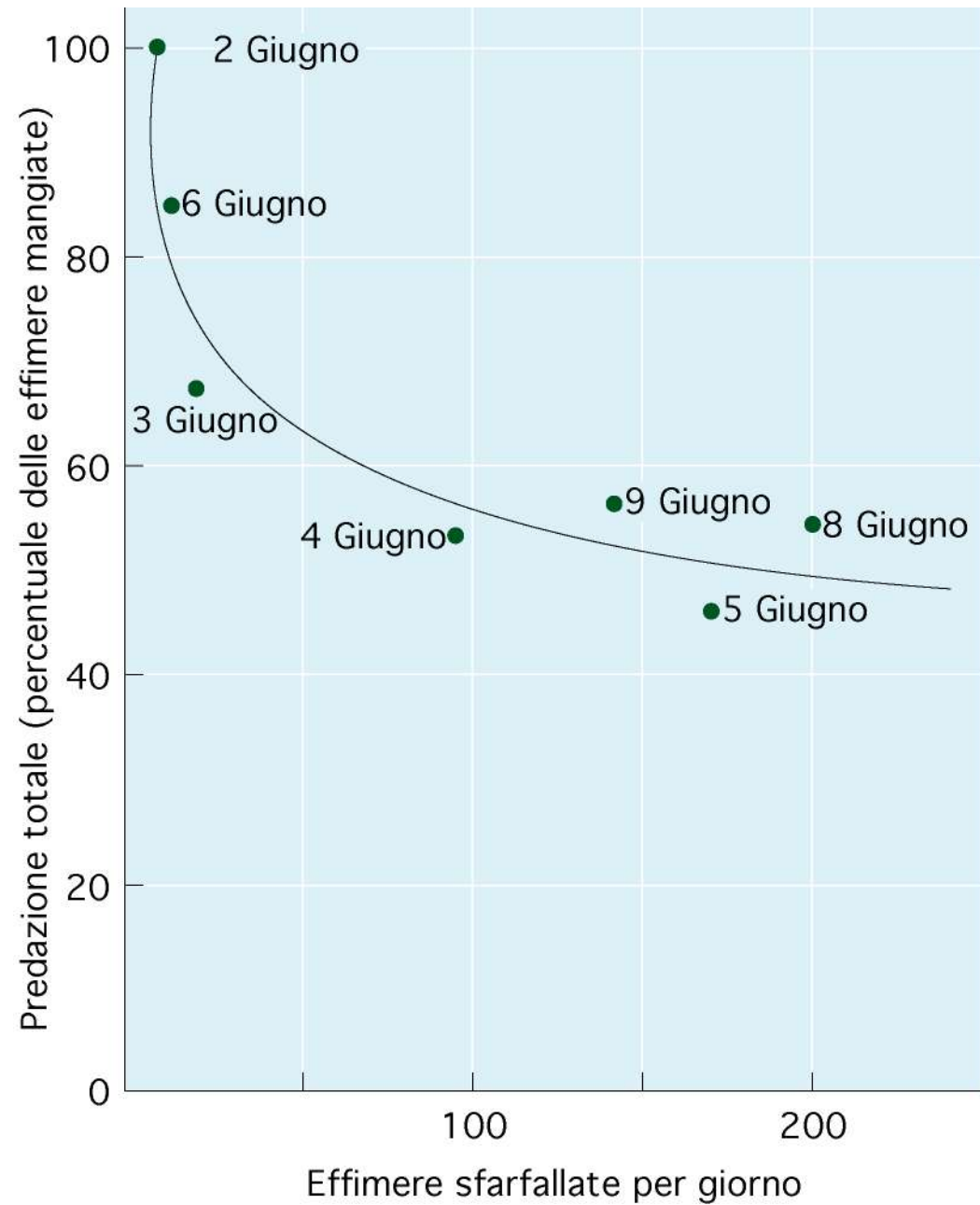


(A)



(B)





(A)



(B)



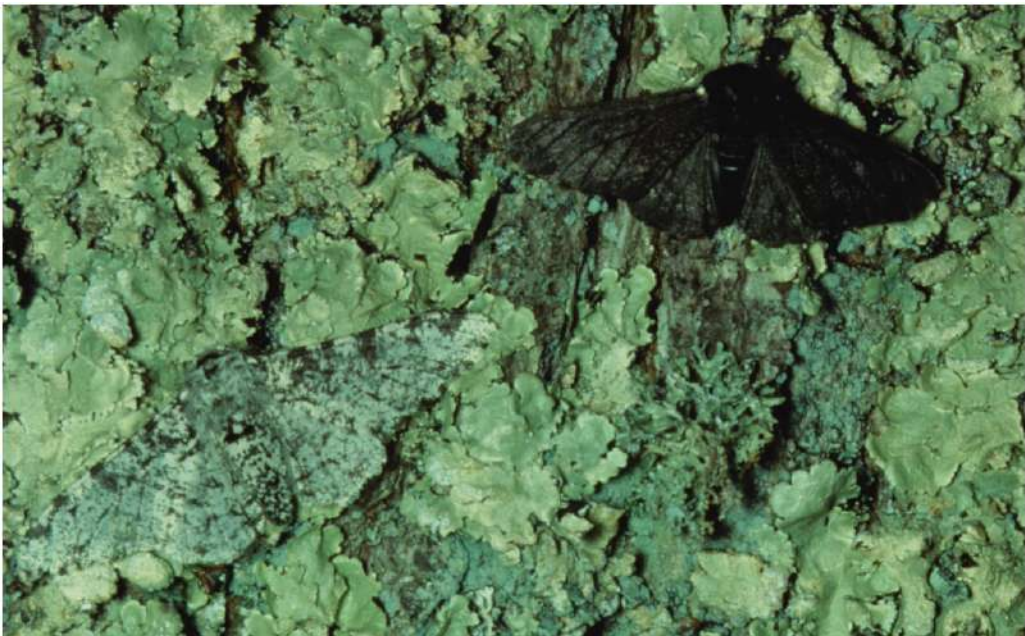
(C)





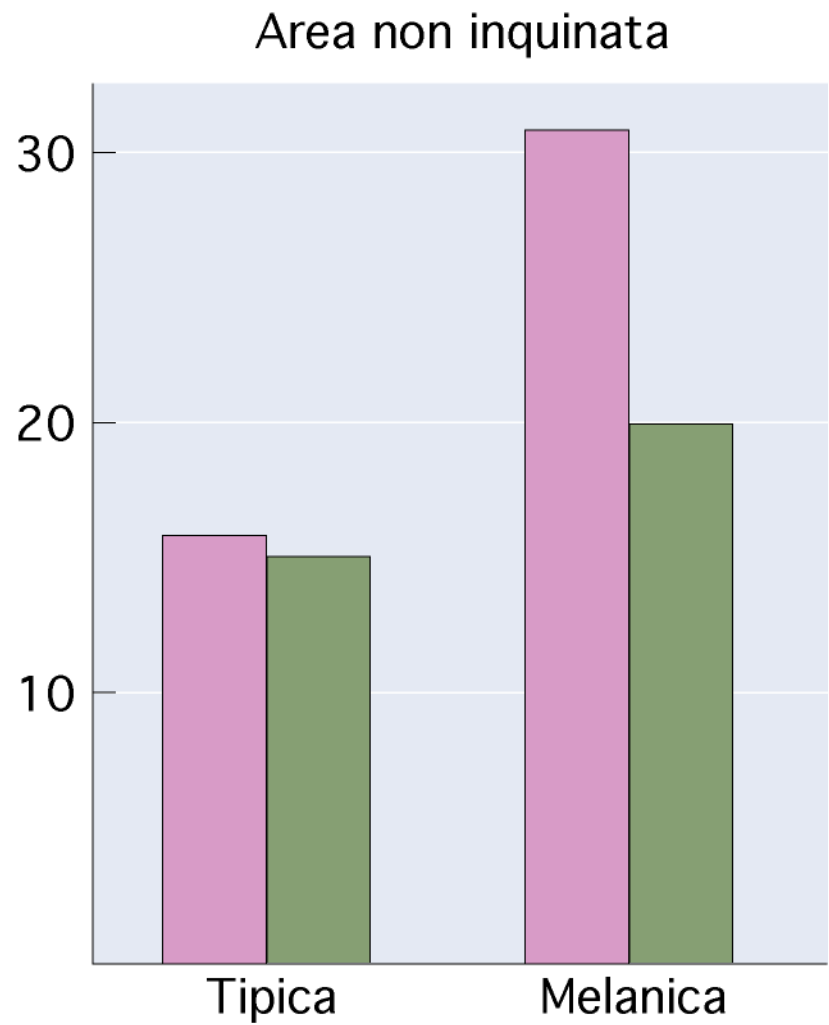
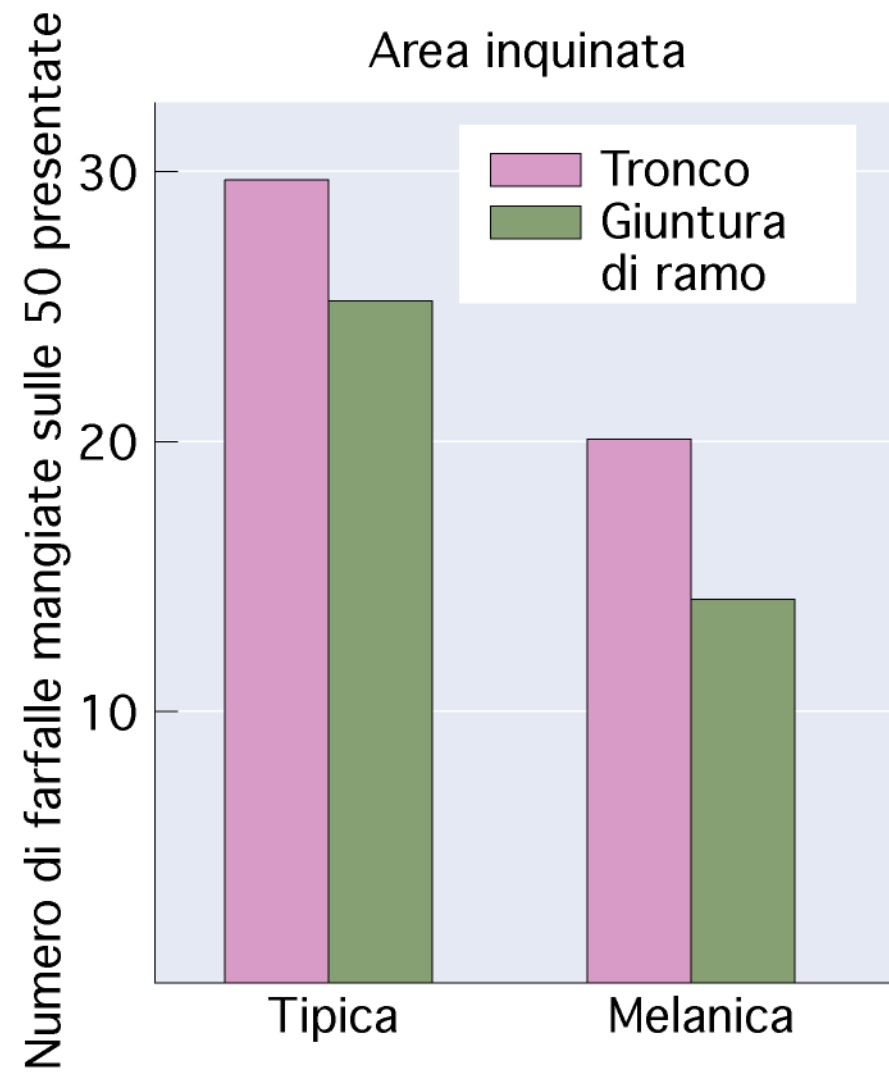


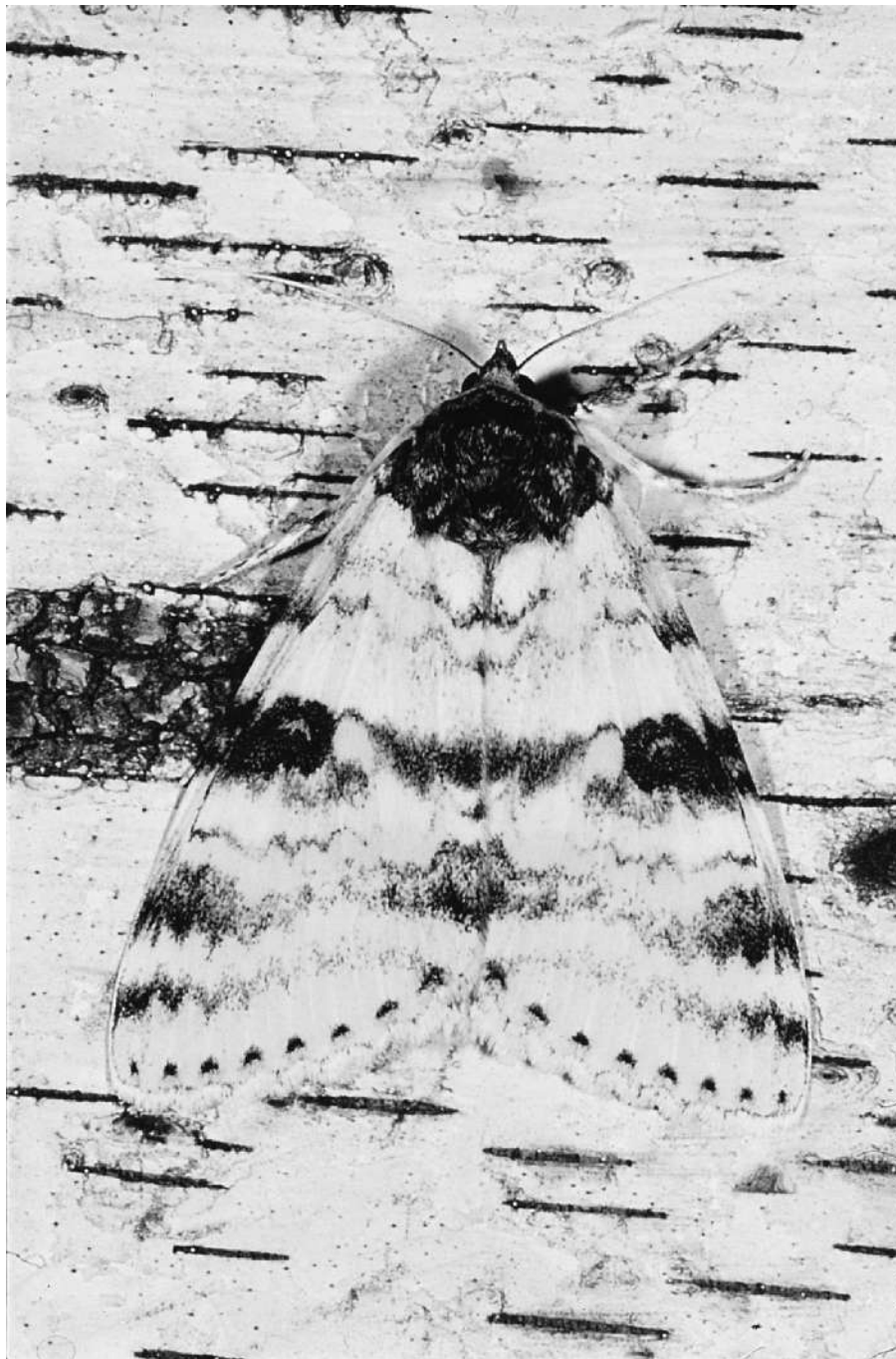




Farfalla
notturna
scura

Farfalla
notturna
chiara



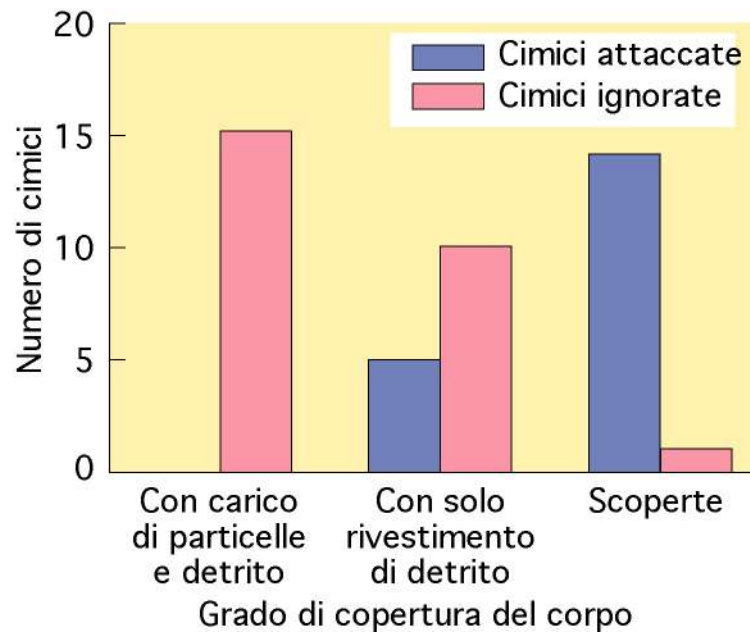


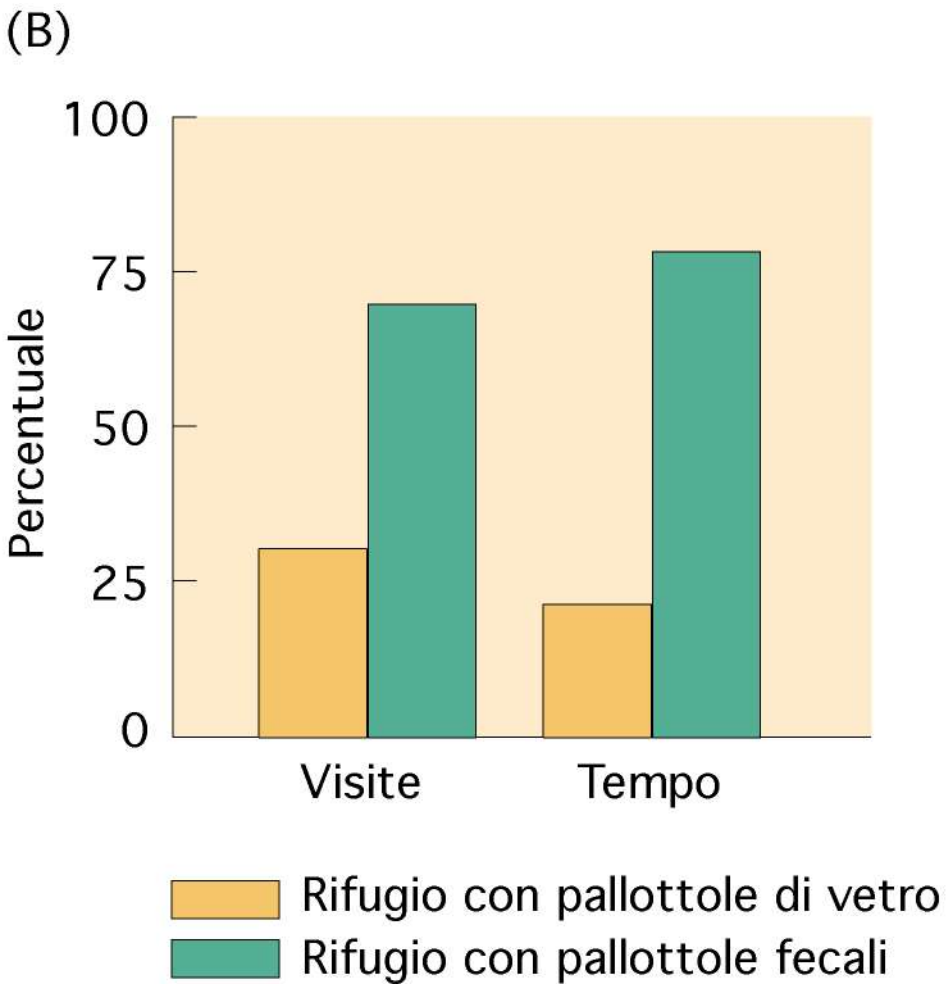


(A)



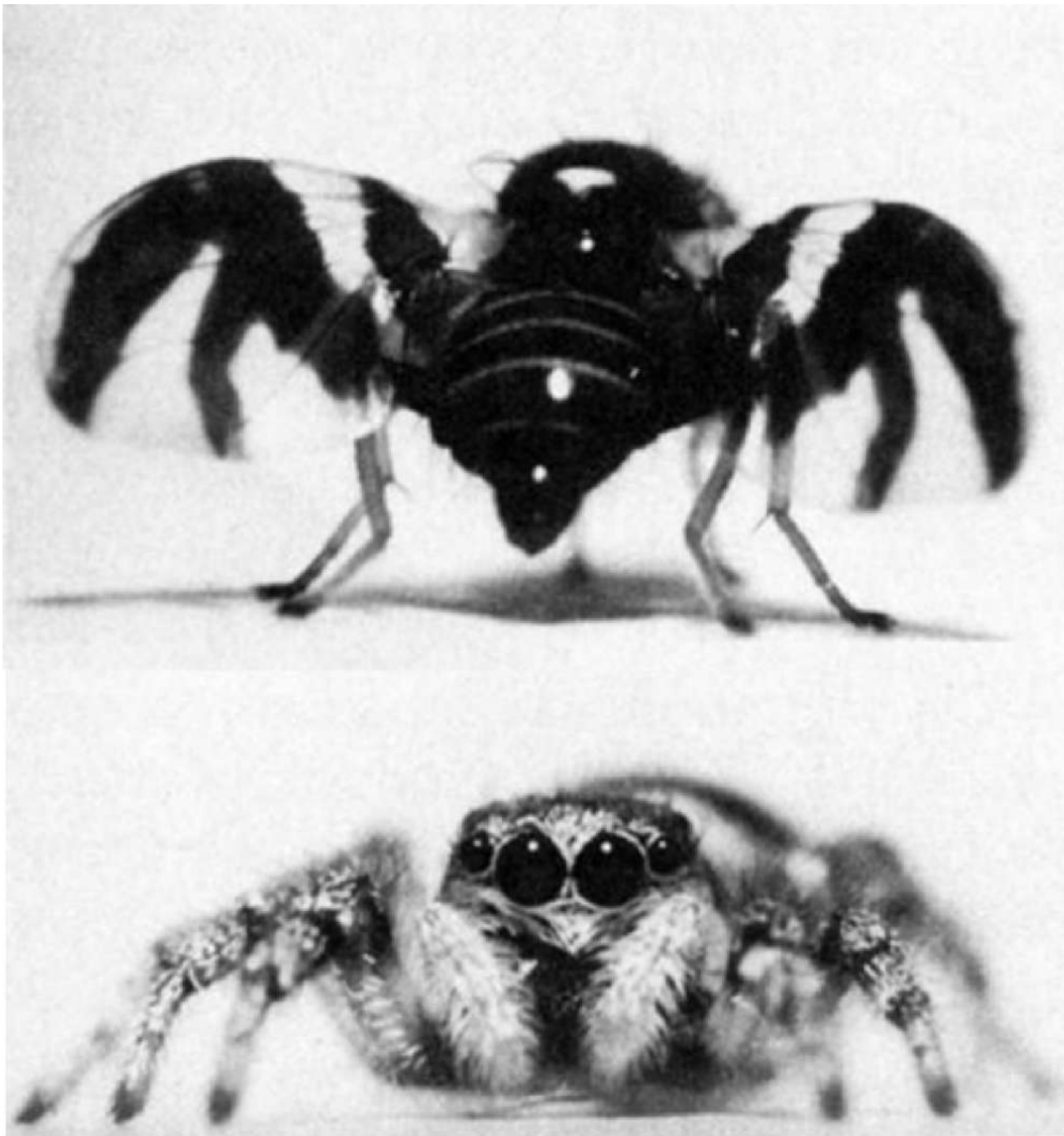
(B)









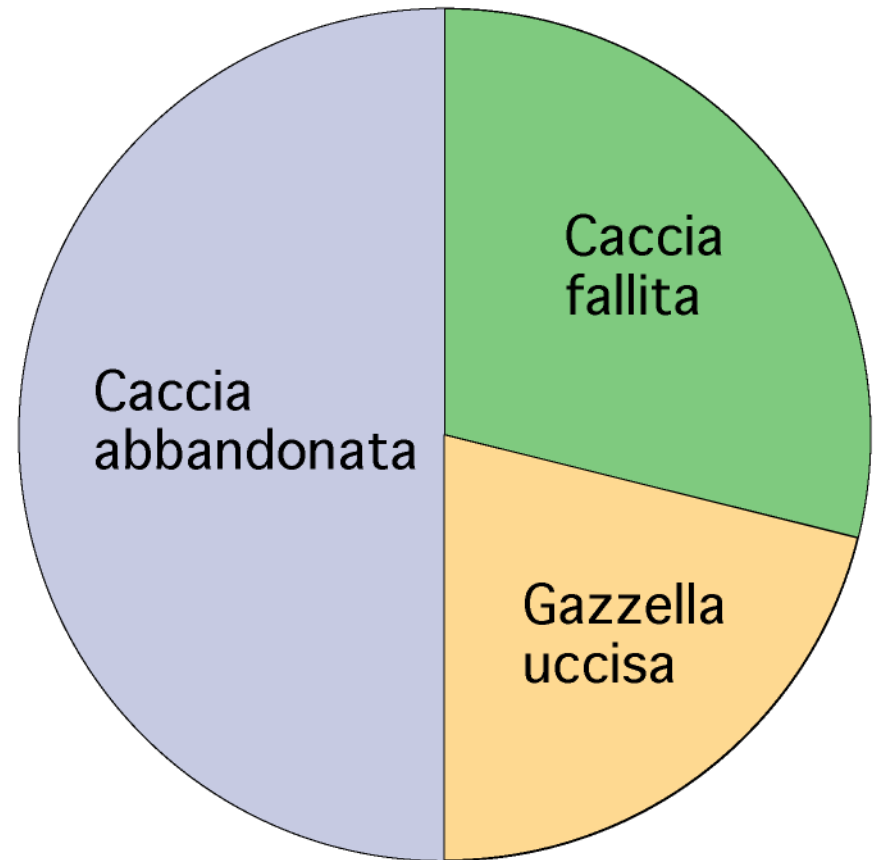




Gazzella che pratica lo stotting



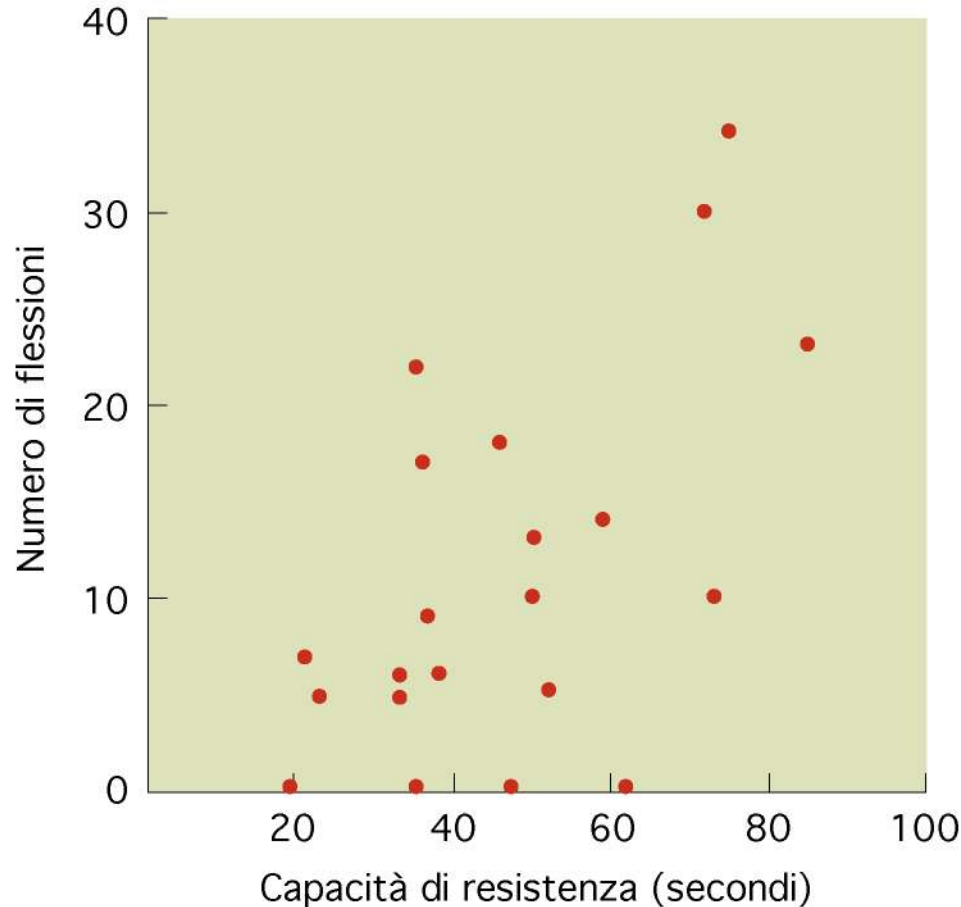
Gazzella che non pratica lo stotting



(A)

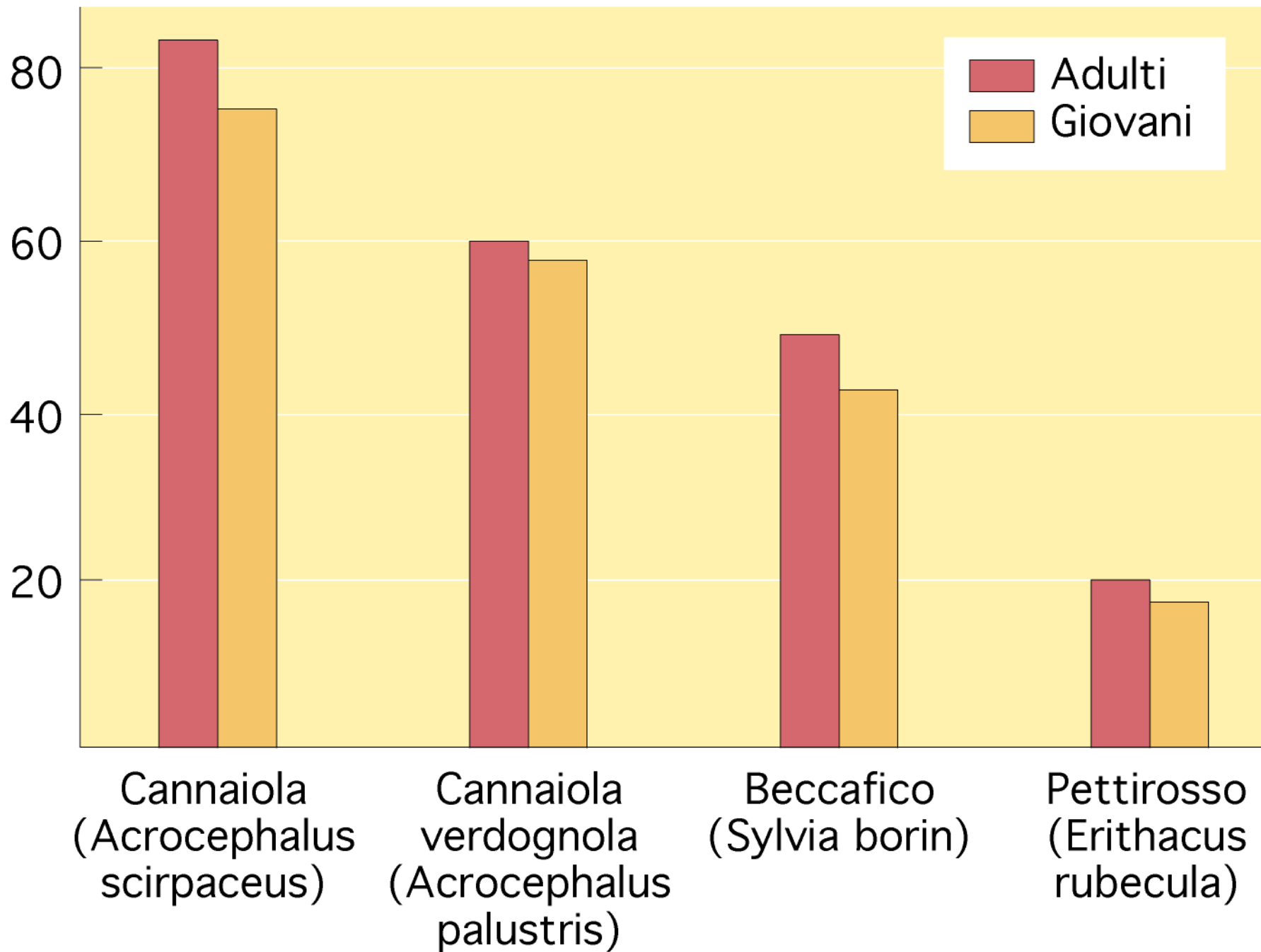


(B)

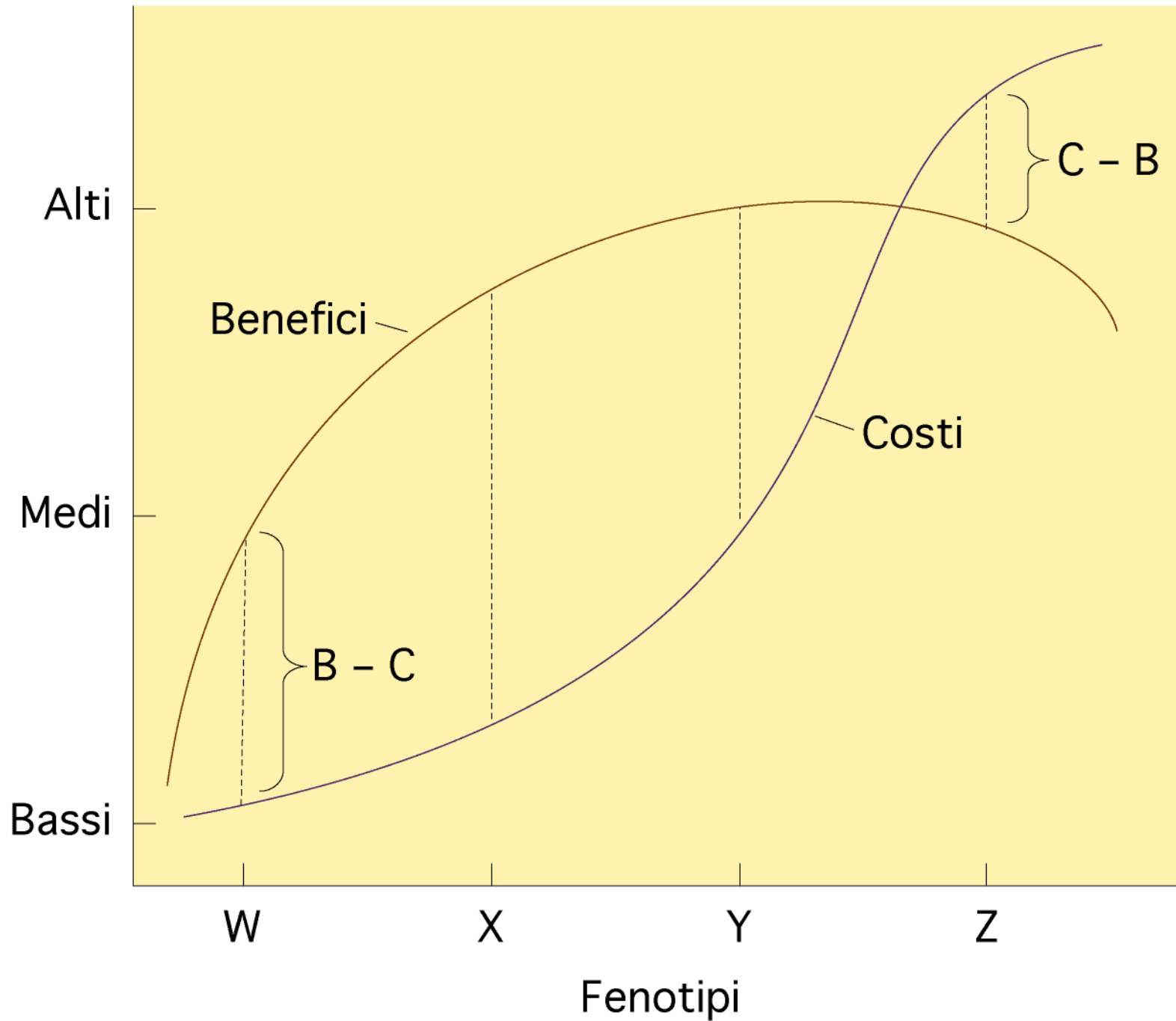


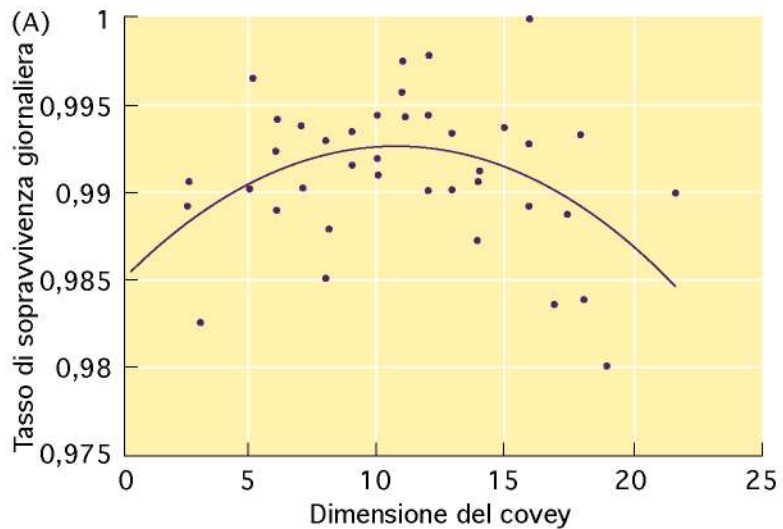


Percentuale che emette urla di paura

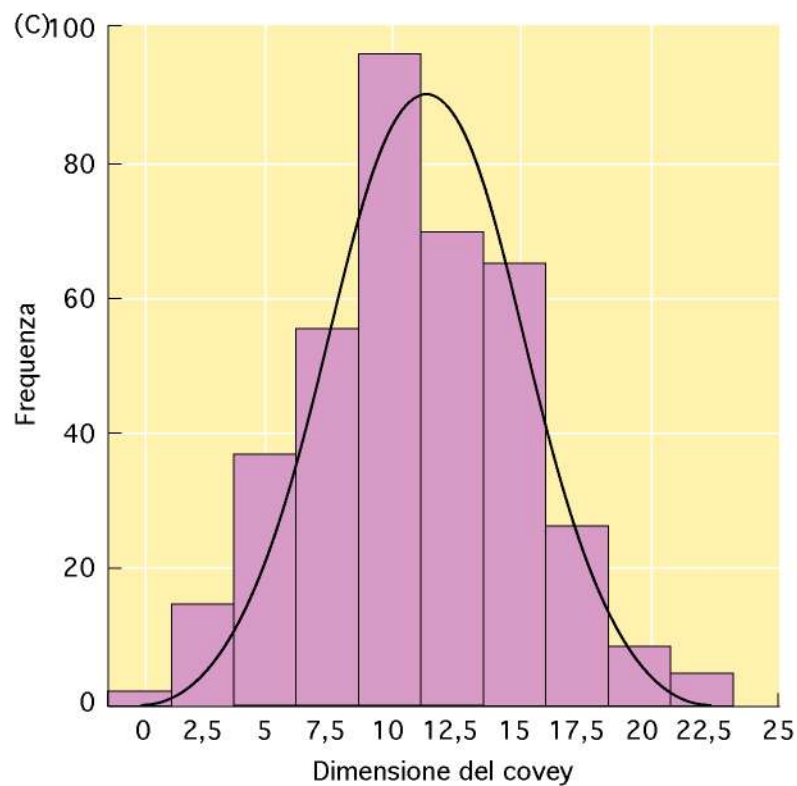
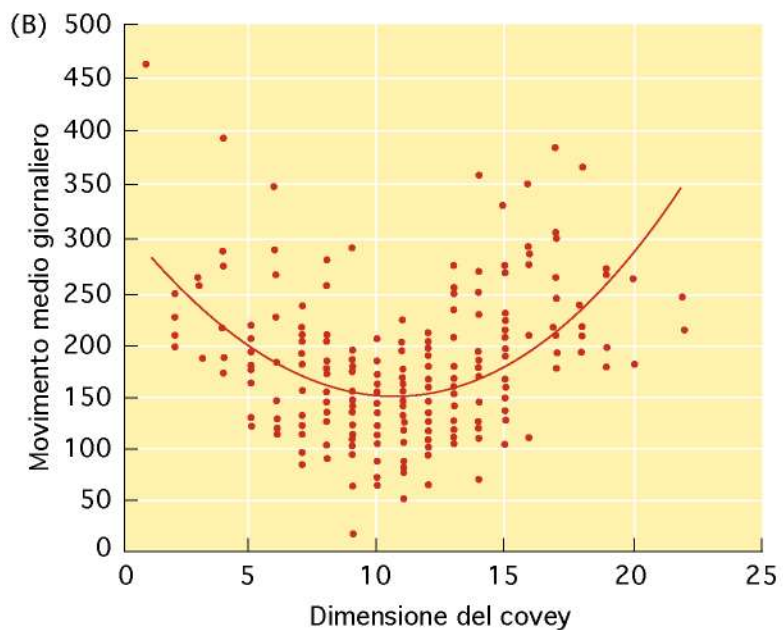


Costi di fitness (e benefici)





Colino della Virginia





Avversario

Solitario

Sociale

Solitario

$$P$$

$$P - B$$

Animale
focale

Sociale

$$P + B - C$$

$$P + \frac{B}{2} - \frac{B}{2} - C = P - C$$